

# SERVICE MANUAL

W940PU / W945PUQ

*notebook*





**Notebook Computer**  
**W940PU / W945PUQ**  
**Service Manual**

## Notice

The company reserves the right to revise this publication or to change its contents without notice. Information contained herein is for reference only and does not constitute a commitment on the part of the manufacturer or any subsequent vendor. They assume no responsibility or liability for any errors or inaccuracies that may appear in this publication nor are they in anyway responsible for any loss or damage resulting from the use (or misuse) of this publication.

This publication and any accompanying software may not, in whole or in part, be reproduced, translated, transmitted or reduced to any machine readable form without prior consent from the vendor, manufacturer or creators of this publication, except for copies kept by the user for backup purposes.

Brand and product names mentioned in this publication may or may not be copyrights and/or registered trademarks of their respective companies. They are mentioned for identification purposes only and are not intended as an endorsement of that product or its manufacturer.

Version 1.0  
February 2017

## Trademarks

**Pentium and Celeron** are trademarks of Intel Corporation.

**Windows®** is a registered trademark of Microsoft Corporation.

Other brand and product names are trademarks and /or registered trademarks of their respective companies.

## About this Manual

This manual is intended for service personnel who have completed sufficient training to undertake the maintenance and inspection of personal computers.

It is organized to allow you to look up basic information for servicing and/or upgrading components of the **W940PU** / **W945PUQ** series notebook PC.

The following information is included:

Chapter 1, Introduction, provides general information about the location of system elements and their specifications.  
Chapter 2, Disassembly, provides step-by-step instructions for disassembling parts and subsystems and how to upgrade elements of the system.

Appendix A, Part Lists

Appendix B, Schematic Diagrams

Appendix C, Updating the FLASH ROM BIOS

## Preface

---

### IMPORTANT SAFETY INSTRUCTIONS

Follow basic safety precautions, including those listed below, to reduce the risk of fire, electric shock and injury to persons when using any electrical equipment:

1. Do not use this product near water, for example near a bath tub, wash bowl, kitchen sink or laundry tub, in a wet basement or near a swimming pool.
2. Avoid using a telephone (other than a cordless type) during an electrical storm. There may be a remote risk of electrical shock from lightning.
3. Do not use the telephone to report a gas leak in the vicinity of the leak.
4. Use only the power cord and batteries indicated in this manual. Do not dispose of batteries in a fire. They may explode. Check with local codes for possible special disposal instructions.
5. This product is intended to be supplied by a Listed Power Unit with an AC Input of 100 - 240V, 50 - 60Hz, DC Output of 19V, 2.1A (**40 Watts**) minimum AC/DC Adapter.

### CAUTION

### This Computer's Optical Device is a Laser Class 1 Product

### FCC Statement

This device complies with Part 15 of the FCC Rules. Operation is subject to the following two conditions:

This device may not cause harmful interference.

This device must accept any interference received, including interference that may cause undesired operation.

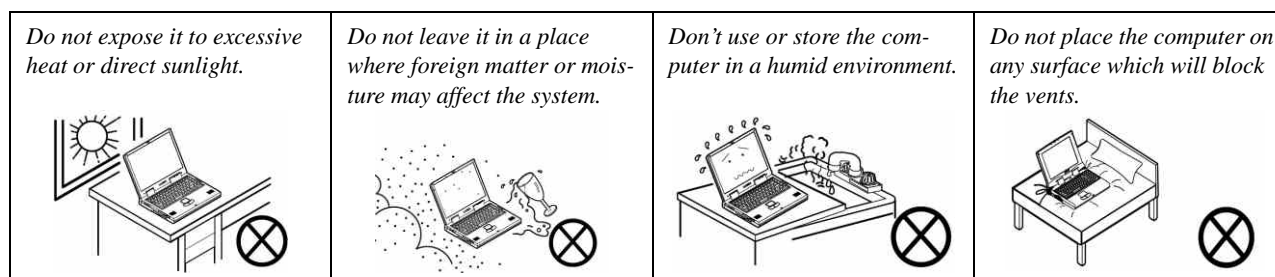
## Instructions for Care and Operation

The notebook computer is quite rugged, but it can be damaged. To prevent this, follow these suggestions:

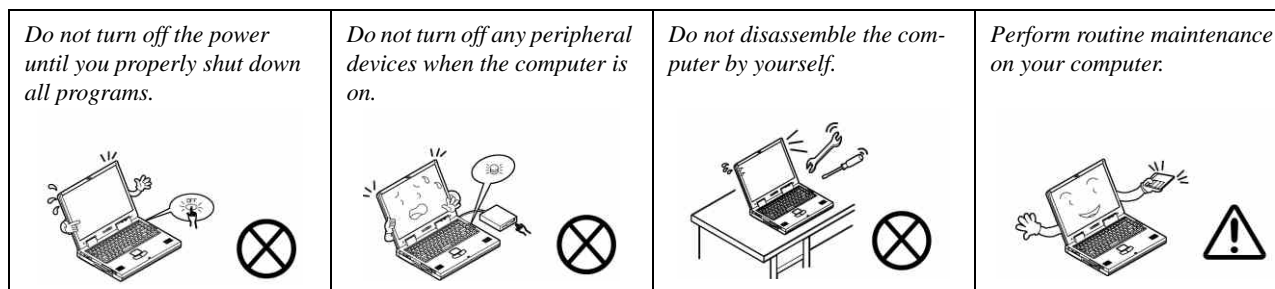
1. **Don't drop it, or expose it to shock.** If the computer falls, the case and the components could be damaged.



2. **Keep it dry, and don't overheat it.** Keep the computer and power supply away from any kind of heating element. This is an electrical appliance. If water or any other liquid gets into it, the computer could be badly damaged.

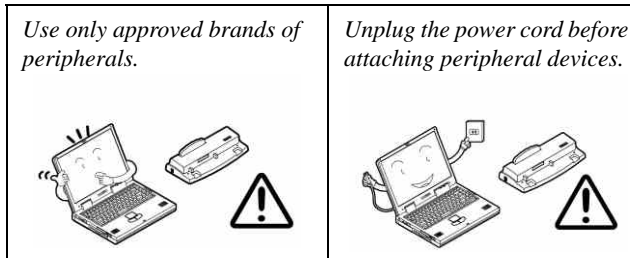


3. **Follow the proper working procedures for the computer.** Shut the computer down properly and don't forget to save your work. Remember to periodically save your data as data may be lost if the battery is depleted.



## Preface

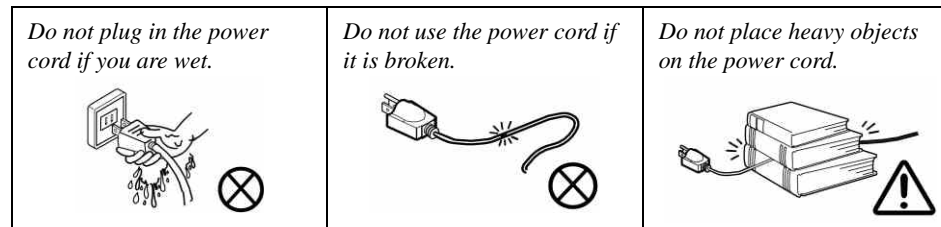
4. **Avoid interference.** Keep the computer away from high capacity transformers, electric motors, and other strong magnetic fields. These can hinder proper performance and damage your data.
5. **Take care when using peripheral devices.**



## Power Safety

The computer has specific power requirements:

- Only use a power adapter approved for use with this computer.
- Your AC adapter may be designed for international travel but it still requires a steady, uninterrupted power supply. If you are unsure of your local power specifications, consult your service representative or local power company.
- The power adapter may have either a 2-prong or a 3-prong grounded plug. The third prong is an important safety feature; do not defeat its purpose. If you do not have access to a compatible outlet, have a qualified electrician install one.
- When you want to unplug the power cord, be sure to disconnect it by the plug head, not by its wire.
- Make sure the socket and any extension cord(s) you use can support the total current load of all the connected devices.
- Before cleaning the computer, make sure it is disconnected from any external power supplies.



### Power Safety Warning

Before you undertake any upgrade procedures, make sure that you have turned off the power, and disconnected all peripherals and cables (including telephone lines and power cord). It is advisable to also remove your battery in order to prevent accidentally turning the machine on.



## Battery Precautions

- Only use batteries designed for this computer. The wrong battery type may explode, leak or damage the computer.
- Do not continue to use a battery that has been dropped, or that appears damaged (e.g. bent or twisted) in any way. Even if the computer continues to work with a damaged battery in place, it may cause circuit damage, which may possibly result in fire.
- Recharge the batteries using the notebook's system. Incorrect recharging may make the battery explode.
- Do not try to repair a battery pack. Refer any battery pack repair or replacement to your service representative or qualified service personnel.
- Keep children away from, and promptly dispose of a damaged battery. Always dispose of batteries carefully. Batteries may explode or leak if exposed to fire, or improperly handled or discarded.
- Keep the battery away from metal appliances.
- Affix tape to the battery contacts before disposing of the battery.
- Do not touch the battery contacts with your hands or metal objects.

## Battery Guidelines

The following can also apply to any backup batteries you may have.

- If you do not use the battery for an extended period, then remove the battery from the computer for storage.
- Before removing the battery for storage charge it to 60% - 70%.
- Check stored batteries at least every 3 months and charge them to 60% - 70%.




### Battery Disposal

The product that you have purchased contains a rechargeable battery. The battery is recyclable. At the end of its useful life, under various state and local laws, it may be illegal to dispose of this battery into the municipal waste stream. Check with your local solid waste officials for details in your area for recycling options or proper disposal.

### Caution

Danger of explosion if battery is incorrectly replaced. Replace only with the same or equivalent type recommended by the manufacturer. Discard used battery according to the manufacturer's instructions.

### Battery Level

Click the battery icon  in the taskbar to see the current battery level and charge status. A battery that drops below a level of 10% will not allow the computer to boot up. Make sure that any battery that drops below 10% is recharged within one week.

## Preface

### Related Documents

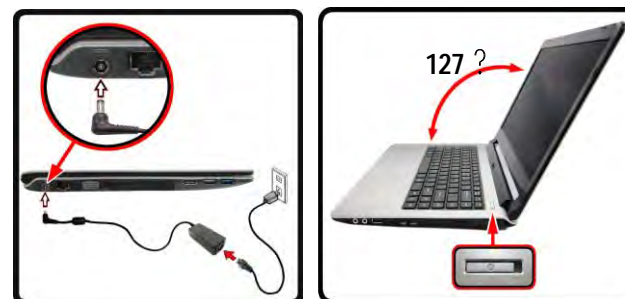
You may also need to consult the following manual for additional information:

#### User's Manual on CD/DVD

This describes the notebook PC's features and the procedures for operating the computer and its ROM-based setup program. It also describes the installation and operation of the utility programs provided with the notebook PC.

### System Startup

1. Remove all packing materials.
2. Place the computer on a stable surface.
3. Insert the battery and make sure it is locked in position.
4. Securely attach any peripherals you want to use with the computer (e.g. keyboard and mouse) to their ports.
5. Attach the AC/DC adapter to the DC-In jack at the rear of the computer, then plug the AC power cord into an outlet, and connect the AC power cord to the AC/DC adapter.
6. Use one hand to raise the lid/LCD to a comfortable viewing angle (do not exceed 127 degrees); use the other hand (as illustrated in Figure 1) to support the base of the computer (**Note: Never** lift the computer by the lid/LCD).
7. Press the power button to turn the computer "on".




*Figure 1*  
**Opening the Lid/LCD/  
Computer with AC/DC  
Adapter Plugged-In**




#### Shut Down

Note that you should always shut your computer down by choosing the **Shut down** command in **Windows** (see below). This will help prevent hard disk or system problems.

Click **Settings** in the **Charms Bar** (use the **Windows Logo Key**  + **C** key combination to access the Charms Bar) and choose **Shut down** from the **Power** menu.

**Or**

Choose **Shut down or sign out > Shut down** from the context menu (use the **Windows Logo Key**  + **X** key combination to access the context menu).

# Contents

## Introduction .....1-1

Overview .....	1-1
Specifications .....	1-2
External Locator - Top View with LCD Panel Open .....	1-4
External Locator - Front & Right Side Views .....	1-5
External Locator - Left Side & Rear View .....	1-6
External Locator - Bottom View .....	1-7
Mainboard Overview - Top (Key Parts) .....	1-8
Mainboard Overview - Bottom (Key Parts) .....	1-9
Mainboard Overview - Top (Connectors) .....	1-10
Mainboard Overview - Bottom (Connectors) .....	1-11

## Disassembly .....2-1

Overview .....	2-1
Maintenance Tools .....	2-2
Connections .....	2-2
Maintenance Precautions .....	2-3
Disassembly Steps .....	2-4
Removing the Battery .....	2-5
Removing the Optical (CD/DVD) Device .....	2-7
Installing and Removing the Dummy ODD Bezel .....	2-9
Removing the Hard Disk Drive .....	2-10
Removing the System Memory (RAM) .....	2-12
Removing the Keyboard .....	2-14
Removing the Wireless LAN Module .....	2-15
Wireless LAN, and Combo Module Cables .....	2-16
Removing the 3G Module .....	2-17
Removing the CCD .....	2-18

## Part Lists .....A-1

Part List Illustration Location .....	A-2
---------------------------------------	-----

Top (Stand) (W940PU) .....	A-3
Top (W945PUQ) .....	A-4
Bottom - ODD (W940PU) .....	A-5
Bottom - Dummy (W940PU) .....	A-6
Bottom (W945PUQ) .....	A-7
LCD (W940PU) .....	A-8
LCD (W945PUQ) .....	A-9
DVD DUAL (W940PU) .....	A-10
DVD DUAL (W945PUQ) .....	A-11
HDD .....	A-12

## Schematic Diagrams.....B-1

System Block Diagram .....	B-2
Processor 1/8 .....	B-3
Processor 2/8 .....	B-4
Processor 3/8 .....	B-5
Processor 4/8 .....	B-6
Processor 5/8 .....	B-7
Processor 6/8 .....	B-8
Processor 7/8 .....	B-9
Processor 8/8 .....	B-10
eMMC .....	B-11
DDR SO-DIMM_A .....	B-12
DDR SO-DIMM_B .....	B-13
PS8625 .....	B-14
Panel Conn .....	B-15
RTD2168, CRT .....	B-16
HDMI .....	B-17
Audio Codec .....	B-18
RTL8411B .....	B-19
Fan, Click, CCD Conn .....	B-20

## Preface

---

HDD, ODD, LED, LID, TPM .....	B-21
NGFF .....	B-22
USB .....	B-23
KBC IT8987E .....	B-24
System Power .....	B-25
VDD3, VDD5 .....	B-26
PWR_VDDQ, VTT .....	B-27
1.05VA, 1.8VA, 1.24VA .....	B-28
PWR_VCGI .....	B-29
PWR_VNN .....	B-30
AC_IN, Charger .....	B-31
Audio Board .....	B-32
Power SW Board .....	B-33
Power Sequence .....	B-34

## Updating the FLASH ROM BIOS..... C-1


Download the BIOS .....	C-1
Unzip the downloaded files to a bootable CD/DVD/ or	
USB Flash drive .....	C-1
Set the computer to boot from the external drive .....	C-1
Use the flash tools to update the BIOS .....	C-2
Restart the computer (booting from the HDD) .....	C-2

# Chapter 1: Introduction

## Overview

This manual covers the information you need to service or upgrade the **W940PU / W945PUQ** series notebook computer. Information about operating the computer (e.g. getting started, and the *Setup* utility) is in the *User's Manual*. Information about drivers (e.g. VGA & audio) is also found in the *User's Manual*. The manual is shipped with the computer.

Operating systems (e.g. *Window 10*, etc.) have their own manuals as do application softwares (e.g. word processing and database programs). If you have questions about those programs, you should consult those manuals.

The **W940PU / W945PUQ** series notebook is designed to be upgradeable. See [Disassembly on page 2 - 1](#) for a detailed description of the upgrade procedures for each specific component. Please take note of the warning and safety information indicated by the “” symbol.

The balance of this chapter reviews the computer's technical specifications and features.

## Introduction

## Specifications



### Latest Specification Information

The specifications listed here are correct at the time of sending them to the press. Certain items (particularly processor types/speeds) may be changed, delayed or updated due to the manufacturer's release schedule. Check with your service center for more details.



### CPU

The CPU is not a user serviceable part. Accessing the CPU in any way may violate your warranty.

### Processor Options

#### Intel® Pentium® Processor

##### N4200 (1.10GHz)

2MB Smart Cache, **14nm**, DDR3L-1866MHz, TDP 6W

#### Intel® Celeron® Processor

##### N3450 (1.10GHz)

2MB Smart Cache, **14nm**, DDR3L-1866MHz, TDP 6W

##### N3350 (1.10GHz)

2MB Smart Cache, **14nm**, DDR3L-1866MHz, TDP 6W

### BIOS

64Mb SPI Flash ROM

AMI BIOS

### Memory

Two 204 Pin SO-DIMM Sockets Supporting **DDR3L 1600/1866MHz** Memory

Memory Expandable up to 8GB

### LCD Options

14" (35.56cm), 16:9, HD (1366x768)/FHD (1920x1080)

### Video Adapter

#### Intel HD Graphics

Dynamic Frequency

Intel Dynamic Video Memory Technology

Microsoft DirectX®12 Compatible

### Audio

High Definition Audio Compliant Interface

2 \* Built-In Speakers

Built-In Microphone

**(Factory Option)** Built-In Array Microphone

### Security

Security (Kensington® Type) Lock Slot

BIOS Password

Intel® PTT

**(Factory Option)** TPM v 2.0

### Storage

One Changeable 2.5" **7mm** (h) SATA **HDD**

**(Factory Option)** One 9.5mm(h) Optical Device Type Drive (Super Multi Drive)

Or

**(Factory Option)** Dummy ODD

**(Factory Option)** 32GB eMMC

### Pointing Device

Built-in Touchpad

### Keyboard

"WinKey" keyboard (with embedded numeric keypad)

### M.2 Slots

Slot 1 for **WLAN and Bluetooth** Combo Module

**(Factory Option)** Slot 2 for **3G** or **4G** Module

### Interface

One HDMI-Out Port

One External Monitor Port

One Headphone-Out Jack

One Microphone-In Jack

One RJ-45 LAN Jack

Two USB 3.0 Ports

One DC-in Jack

One USB 2.0 Port

**Communication**

Built-In 10/100/1000Mb Base-TX Ethernet LAN

1.0M HD PC Camera Module

(Factory Option) 3G or 4G M.2 Module

**WLAN/Bluetooth M.2 Modules:**

(Factory Option) Intel® Wireless-AC 3168 Wireless LAN (802.11ac) + Bluetooth 4.0

(Factory Option) Intel® Wireless-N 7265 Wireless LAN (802.11b/g/n) + Bluetooth 4.0

(Factory Option) Third-Party Wireless LAN (802.11b/g/n) + Bluetooth 4.0

**Card Reader**

Embedded Multi-In-1 Card Reader

MMC (MultiMedia Card) / RS MMC

SD (Secure Digital) / Mini SD / SDHC/ SDXC

MS (Memory Stick) / MS Pro / MS Duo

**Environmental Spec****Temperature**

Operating: 5°C - 35°C

Non-Operating: -20°C - 60°C

**Relative Humidity**

Operating: 20% - 80%

Non-Operating: 10% - 90%

**Power**

Full Range AC/DC Adapter

AC Input: 100 - 240V, 50 - 60Hz

DC Output: 19V, 2.1A (40W)

Built-in 4 Cell Smart Lithium-Ion Battery Pack, 32WH

(Factory Option) Built-in 3 Cell Smart Lithium-Ion Battery Pack, 24WH

(Factory Option) Built-in 4 Cell Smart Lithium-Ion Battery Pack, 44WH

(Factory Option) Built-in 6 Cell Smart Lithium-Ion Battery Pack, 48WH

(Factory Option) Built-in 6 Cell Smart Lithium-Ion Battery Pack, 62WH

**Dimensions & Weight**

340mm (w) \* 242mm (d) \* 26.5mm (h)

(Height Excluding Battery Area)

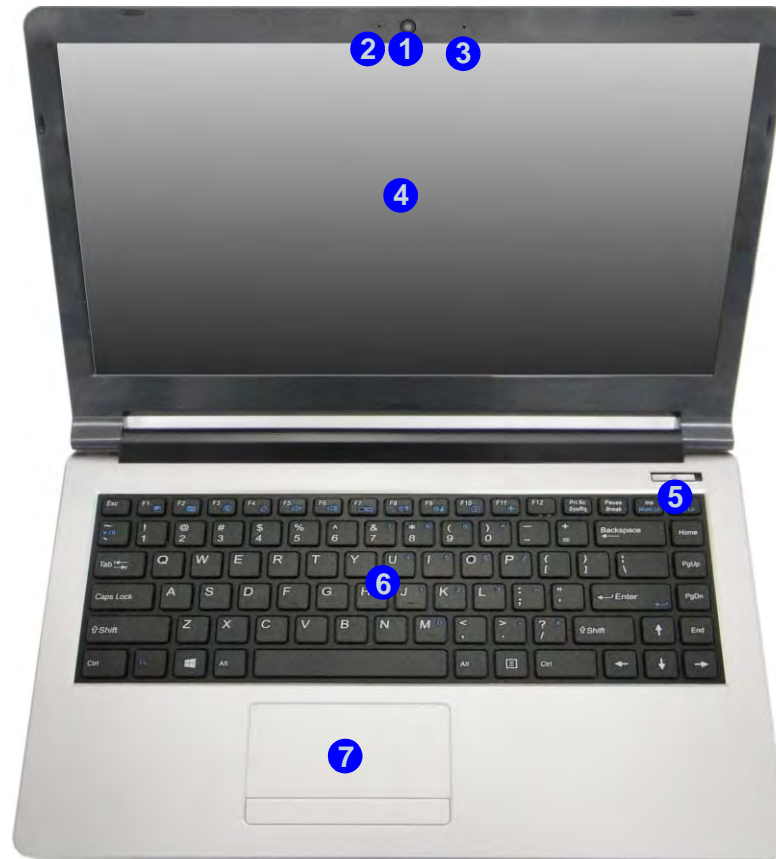
2.0kg (Barebone with ODD and 32WH Battery)

## Introduction

*Figure 1*  
**Top View**

1. PC Camera
2. \*PC Camera LED  
*\*When the PC camera is in use, the LED will be illuminated in red.*
3. Built-In Microphone
4. LCD
5. Power Button
6. Keyboard
7. Touchpad & Buttons

## External Locator - Top View with LCD Panel Open





## External Locator - Front & Right Side Views

FRONT VIEW



*Figure 2*  
**Front View**

1. LED Indicator
2. Multi-in-1 Card Reader

RIGHT SIDE VIEW



*Figure 3*  
**Right Side View**

1. Microphone-In Jack
2. Headphone-Out Jack
3. USB 2.0 Port
4. Optical Device Drive Bay
5. Emergency Eject Hole
6. Security Lock Slot

## Introduction

### External Locator - Left Side & Rear View

*Figure 4*  
**Left Side View**

1. DC-In Jack
2. RJ-45 LAN Jack
3. External Monitor Port
4. Vent
5. HDMI-Out Port
6. USB 3.0 Ports

LEFT SIDE VIEW

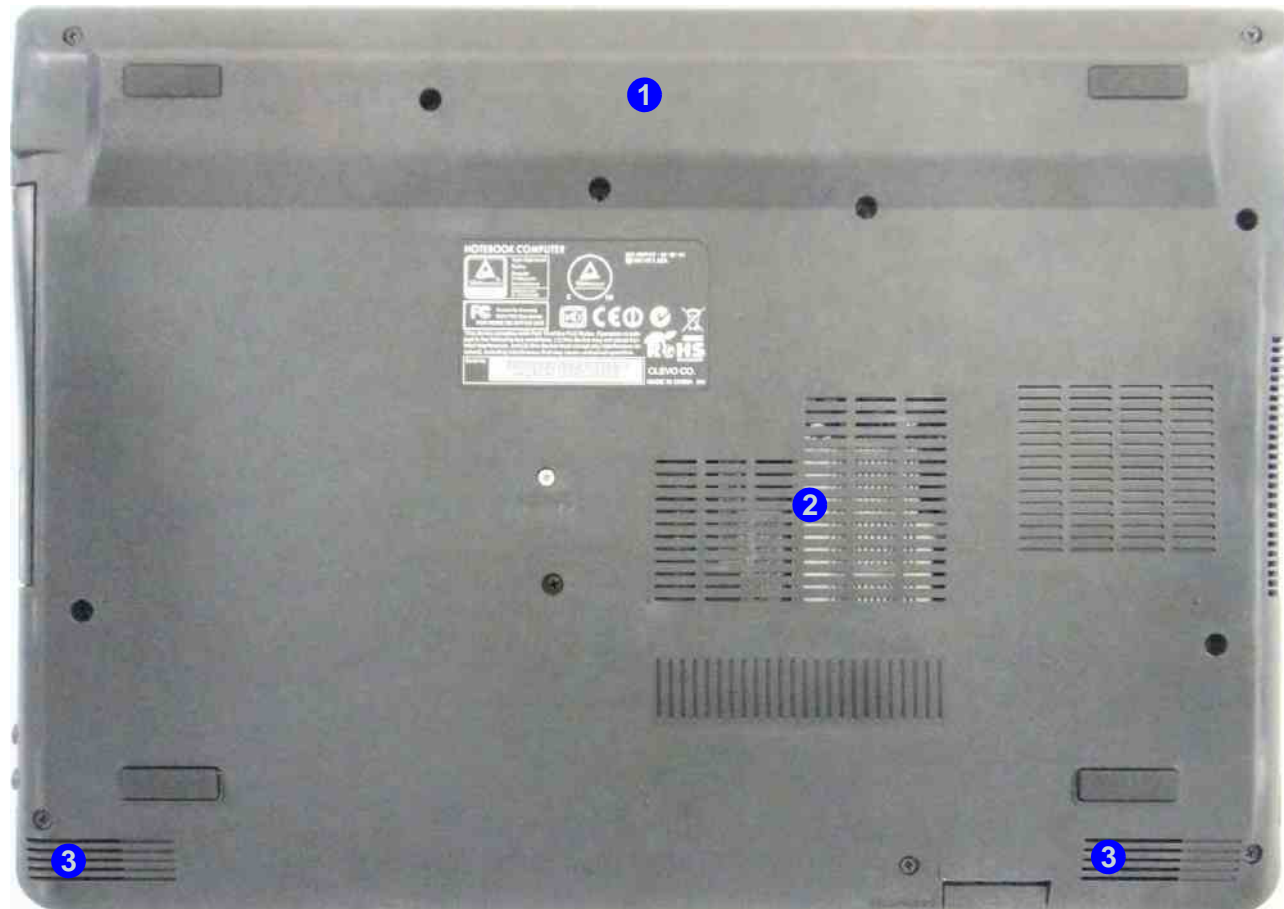


*Figure 5*  
**Rear View**

REAR VIEW



## External Locator - Bottom View



*Figure 6*  
**Bottom View**

1. Battery Location
2. Vent
3. Speakers



### Overheating

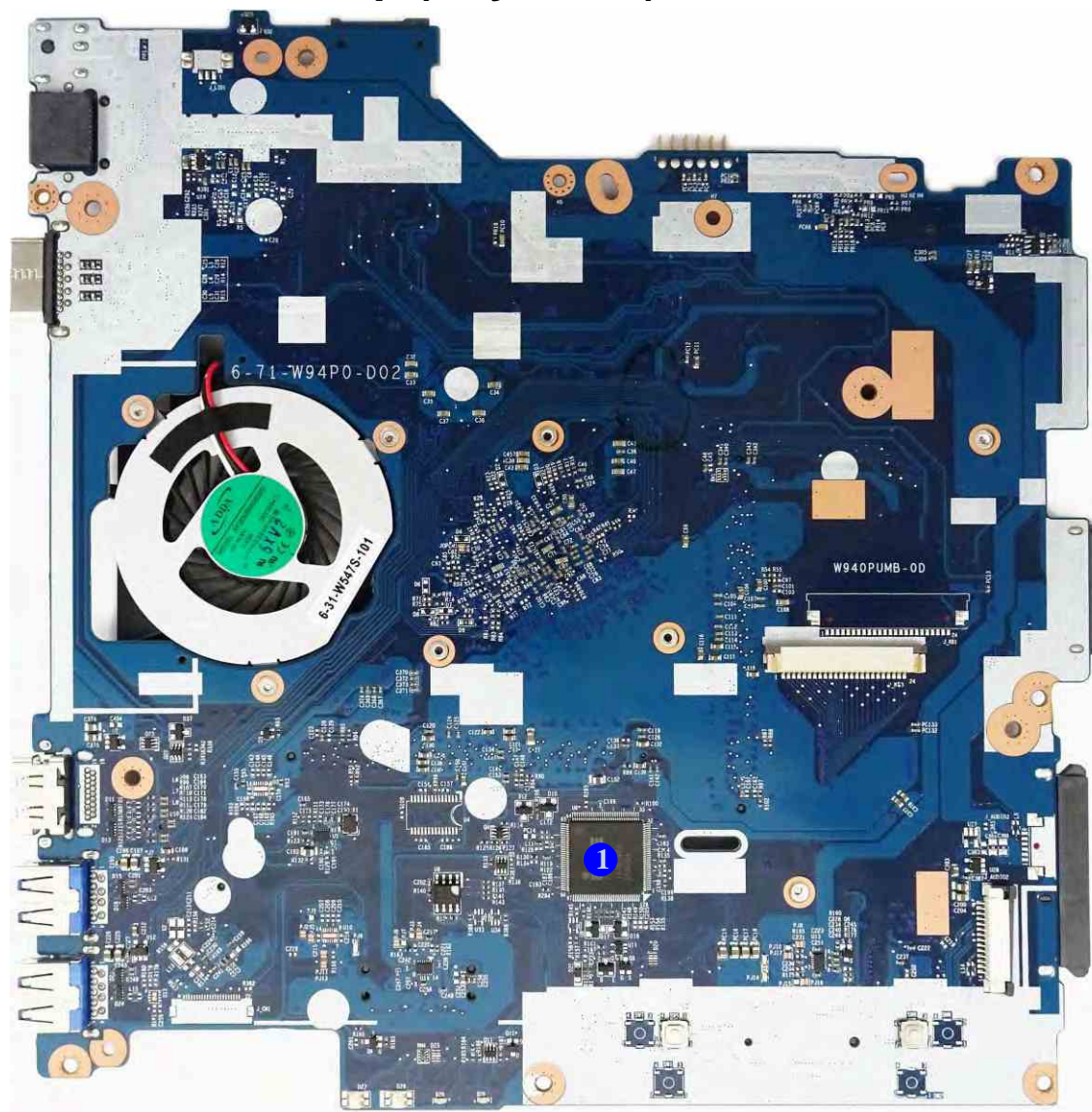
To prevent your computer from overheating, make sure nothing blocks any vent while the computer is in use.

## Introduction

*Figure 7*  
**Mainboard Top  
Key Parts**

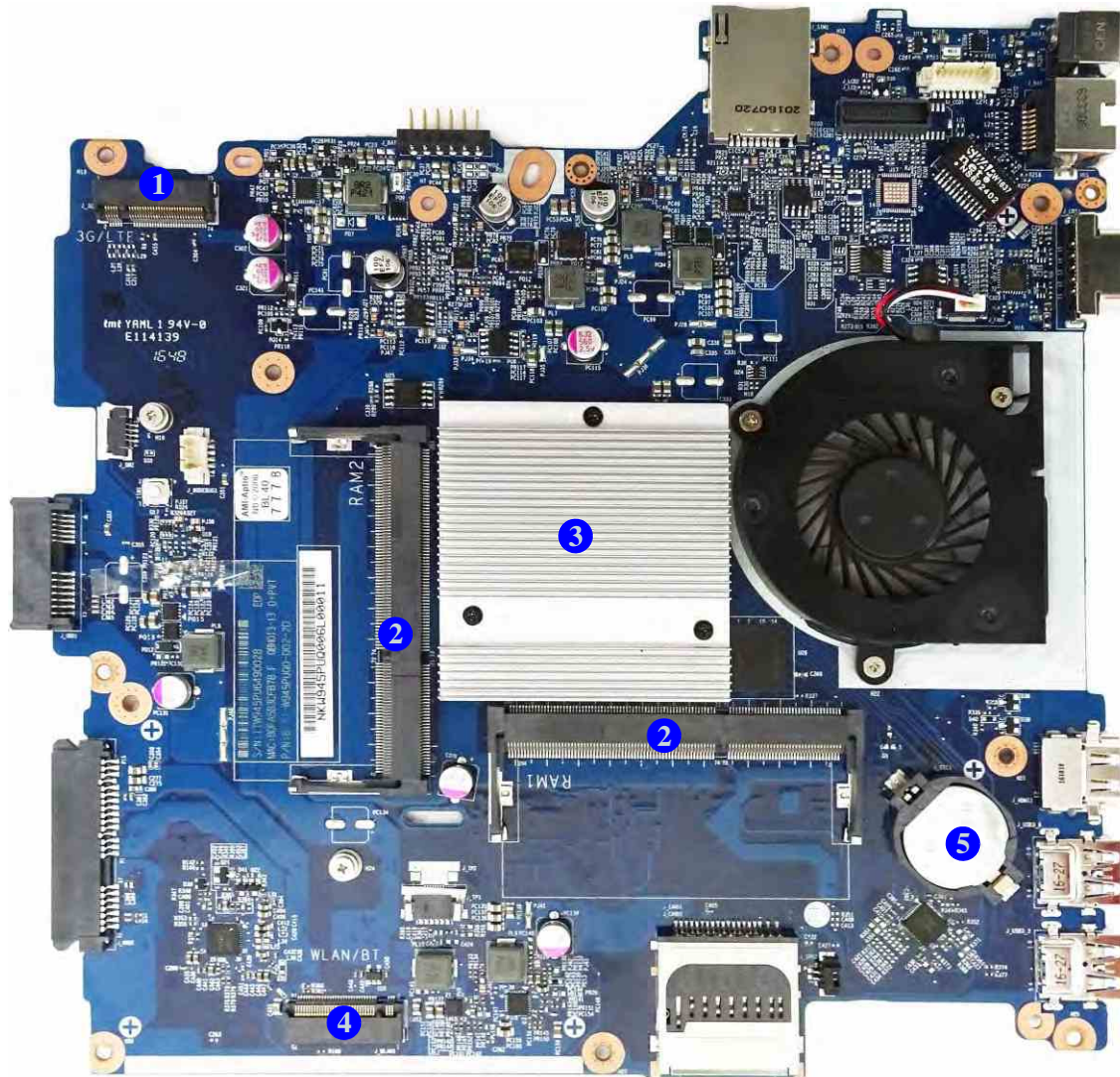
1. KBC-ITE IT8587

## Mainboard Overview - Top (Key Parts)





## Mainboard Overview - Bottom (Key Parts)



*Figure 8*  
**Mainboard Bottom  
Key Parts**

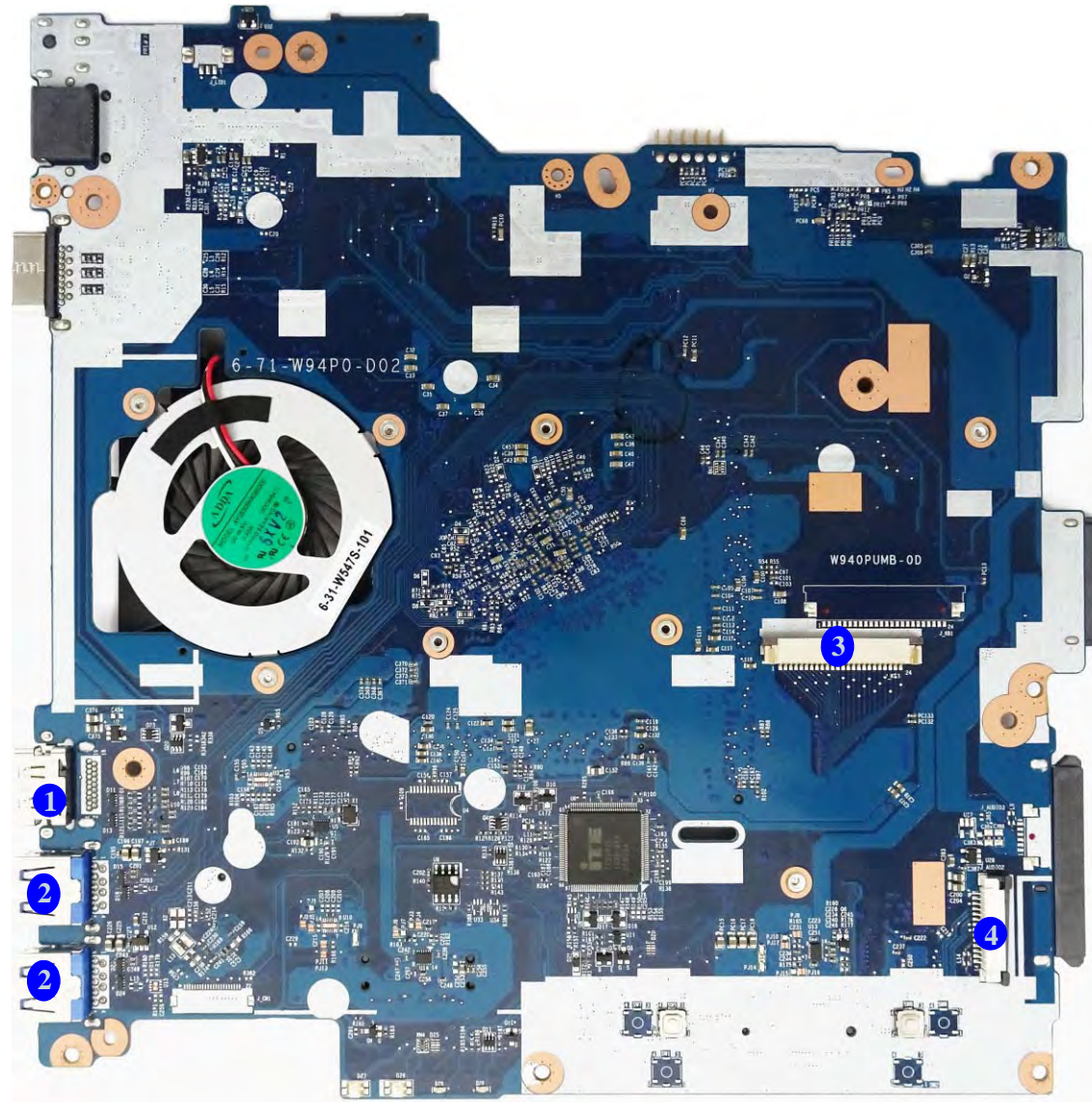
1. M.2 Card Connector (3G Module)
2. Memory Slots (DDR3 SO-DIMM)
3. CPU
4. M.2 Card Connector (WLAN Module)
5. CMOS Battery

## Introduction

*Figure 9*  
**Mainboard Top  
Connectors**

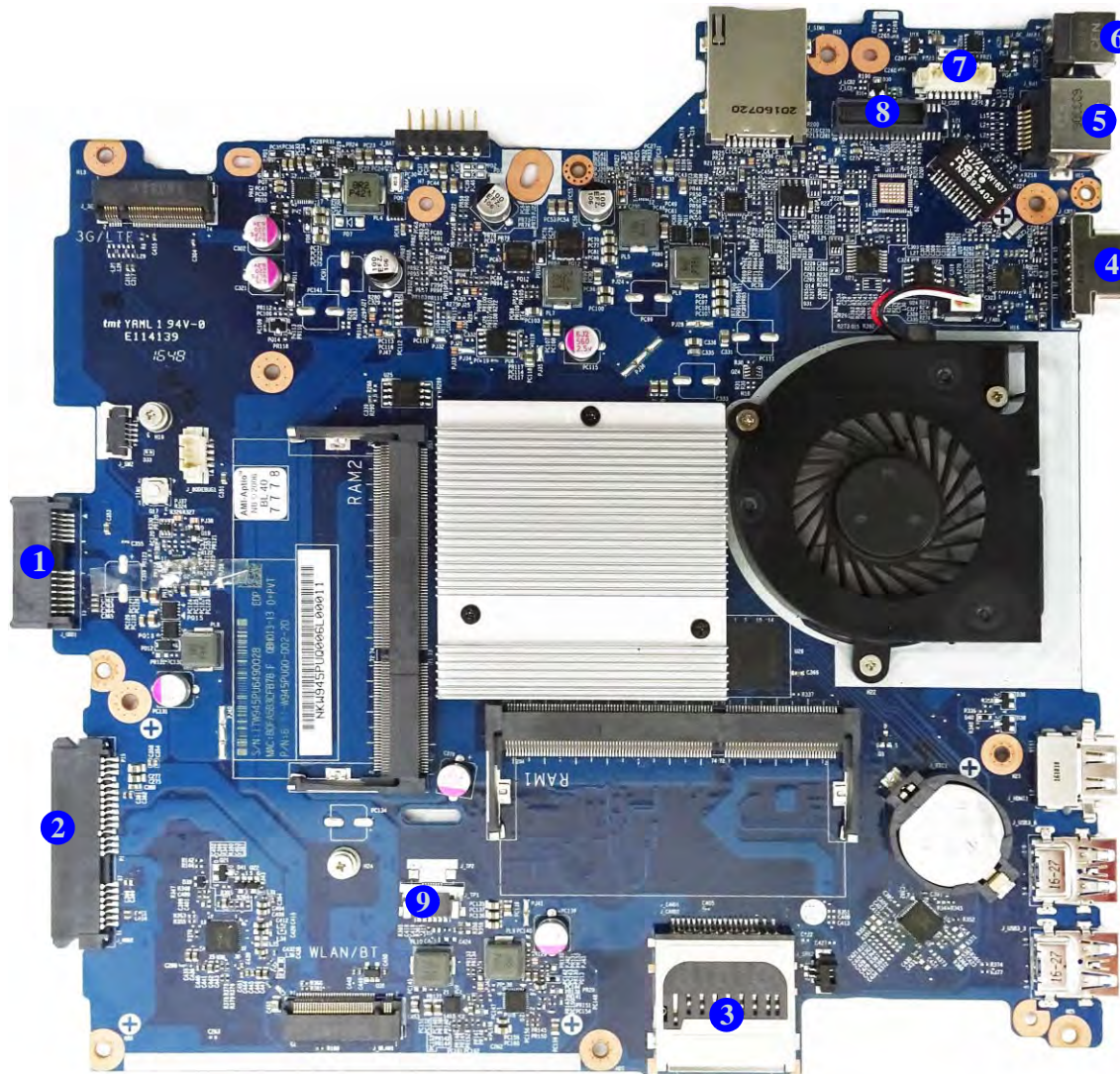
1. HDMI-Out Port
2. USB Ports 3.0
3. Keyboard Cable Connector
4. Audio Board Cable Connector

## Mainboard Overview - Top (Connectors)





## Mainboard Overview - Bottom (Connectors)



*Figure 10*  
**Mainboard Bottom  
Connectors**

1. ODD Connector
2. HDD Connector
3. Multi-in-1 Card Reader
4. External Monitor Port
5. RJ-45 LAN Jack
6. DC-In Jack
7. CCD Connector
8. LCD Cable Connector
9. Touchpad Connector






# Chapter 2: Disassembly

## Overview

This chapter provides step-by-step instructions for disassembling the **W940PU / W945PUQ** series notebook's parts and subsystems. When it comes to reassembly, reverse the procedures (unless otherwise indicated).

We suggest you completely review any procedure before you take the computer apart.

Procedures such as upgrading/replacing the RAM, optical device and hard disk are included in the User's Manual but are repeated here for your convenience.

To make the disassembly process easier each section may have a box in the page margin. Information contained under the figure # will give a synopsis of the sequence of procedures involved in the disassembly procedure. A box with a  lists the relevant parts you will have after the disassembly process is complete. **Note:** The parts listed will be for the disassembly procedure listed ONLY, and not any previous disassembly step(s) required. Refer to the part list for the previous disassembly procedure. The amount of screws you should be left with will be listed here also.

A box with a  will also provide any possible helpful information. A box with a  contains warnings.

An example of these types of boxes are shown in the sidebar.



## Disassembly

---

**NOTE:** All disassembly procedures assume that the system is turned **OFF**, and disconnected from any power supply (the battery is removed too).

### Maintenance Tools

The following tools are recommended when working on the notebook PC:

- M3 Philips-head screwdriver
- M2.5 Philips-head screwdriver (magnetized)
- M2 Philips-head screwdriver
- Small flat-head screwdriver
- Pair of needle-nose pliers
- Anti-static wrist-strap

### Connections

Connections within the computer are one of four types:

Locking collar sockets for ribbon connectors	To release these connectors, use a small flat-head screwdriver to gently pry the locking collar away from its base. When replacing the connection, make sure the connector is oriented in the same way. The pin1 side is usually not indicated.
Pressure sockets for multi-wire connectors	To release this connector type, grasp it at its head and gently rock it from side to side as you pull it out. Do not pull on the wires themselves. When replacing the connection, do not try to force it. The socket only fits one way.
Pressure sockets for ribbon connectors	To release these connectors, use a small pair of needle-nose pliers to gently lift the connector away from its socket. When replacing the connection, make sure the connector is oriented in the same way. The pin1 side is usually not indicated.
Board-to-board or multi-pin sockets	To separate the boards, gently rock them from side to side as you pull them apart. If the connection is very tight, use a small flat-head screwdriver - use just enough force to start.

## Maintenance Precautions

The following precautions are a reminder. To avoid personal injury or damage to the computer while performing a removal and/or replacement job, take the following precautions:

1. **Don't drop it.** Perform your repairs and/or upgrades on a stable surface. If the computer falls, the case and other components could be damaged.
2. **Don't overheat it.** Note the proximity of any heating elements. Keep the computer out of direct sunlight.
3. **Avoid interference.** Note the proximity of any high capacity transformers, electric motors, and other strong magnetic fields. These can hinder proper performance and damage components and/or data. You should also monitor the position of magnetized tools (i.e. screwdrivers).
4. **Keep it dry.** This is an electrical appliance. If water or any other liquid gets into it, the computer could be badly damaged.
5. **Be careful with power.** Avoid accidental shocks, discharges or explosions.
  - Before removing or servicing any part from the computer, turn the computer off and detach any power supplies.
  - When you want to unplug the power cord or any cable/wire, be sure to disconnect it by the plug head. Do not pull on the wire.
6. **Peripherals** – Turn off and detach any peripherals.
7. **Beware of static discharge.** ICs, such as the CPU and main support chips, are vulnerable to static electricity. Before handling any part in the computer, discharge any static electricity inside the computer. When handling a printed circuit board, do not use gloves or other materials which allow static electricity buildup. We suggest that you use an anti-static wrist strap instead.
8. **Beware of corrosion.** As you perform your job, avoid touching any connector leads. Even the cleanest hands produce oils which can attract corrosive elements.
9. **Keep your work environment clean.** Tobacco smoke, dust or other air-born particulate matter is often attracted to charged surfaces, reducing performance.
10. **Keep track of the components.** When removing or replacing any part, be careful not to leave small parts, such as screws, loose inside the computer.

## Cleaning

Do not apply cleaner directly to the computer, use a soft clean cloth.

Do not use volatile (petroleum distillates) or abrasive cleaners on any part of the computer.



### Power Safety Warning

Before you undertake any upgrade procedures, make sure that you have turned off the power, and disconnected all peripherals and cables (including telephone lines and power cord). It is advisable to also remove your battery in order to prevent accidentally turning the machine on.

## Disassembly Steps

The following table lists the disassembly steps, and on which page to find the related information. **PLEASE PERFORM THE DISASSEMBLY STEPS IN THE ORDER INDICATED.**

### To remove the Battery:

1. Remove the battery *page 2 - 5*

### To remove the Optical Device:

1. Remove the battery *page 2 - 5*
2. Remove the optical device *page 2 - 7*

### To remove the HDD:

1. Remove the battery *page 2 - 5*
2. Remove the HDD *page 2 - 10*

### To remove the System Memory:

1. Remove the battery *page 2 - 5*
2. Remove the system memory *page 2 - 12*

### To remove the Keyboard:

1. Remove the battery *page 2 - 5*
2. Remove the keyboard *page 2 - 14*

### To remove the Wireless LAN Module:

1. Remove the battery *page 2 - 5*
2. Remove the WLAN *page 2 - 15*

### To remove the 3G Module:

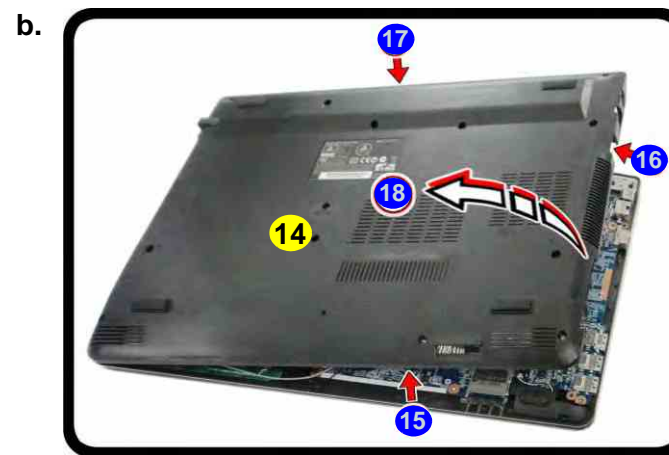
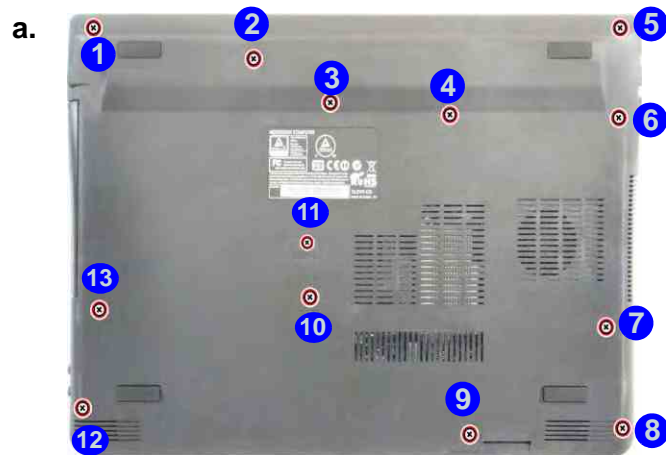
1. Remove the battery *page 2 - 5*
2. Remove the 3G *page 2 - 17*

### To remove the CCD Module:

1. Remove the battery *page 2 - 5*
2. Remove the CCD module *page 2 - 18*

## Removing the Battery

1. Turn **off** the computer, turn it over.
2. Remove screws **1** - **13** from the bottom case (**Figure 1a**).
3. Carefully separate the bottom cover **14** from the top case in the direction of the arrow at point **15** - **18** (**Figure 1b**).
4. The battery will be visible at point **19** (**Figure 1c**).



*Figure 1*  
**Battery Removal**

- a. Remove screws from the bottom case.
- b. Separate the top and bottom case.
- c. The battery will be visible.



14. Bottom Cover

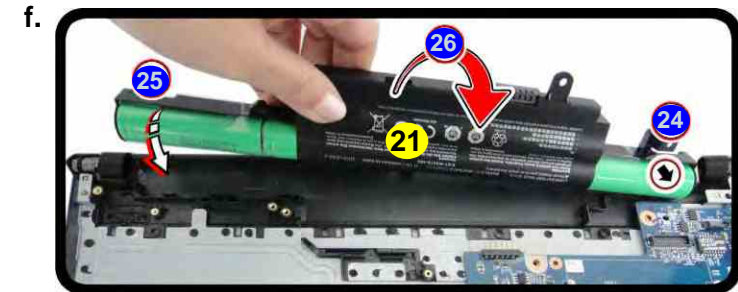
- 13 Screws

## Disassembly

### Figure 2 Battery Removal & Assembly (cont'd.)

- d. Remove the screws.
- e. Turn the battery in the direction of the arrow and lift the battery out.
- f. Install a new battery and turn the battery to align the connector.
- g. Tighten the screws
- h. Reattach the bottom cover and top case.
- i. Snap the sides to close and replace the screws.

5. Remove screws 19 - 20 from the battery (Figure 2d).
6. Turn the battery 21 in the direction of the arrow 22 and lift it out 23 (Figure 2e).
7. Insert a new battery 21 at point 24 in the direction of the arrow 25. Turn the battery 26 to align the connectors.
8. Tighten screws 27 - 28 (Figure 2g).
9. Reattach the bottom cover with the top case at point 29 in the direction of the arrow 30 (Figure 2h).
10. Snap together the sides 31 - 33 of the bottom cover and top case (Figure 2i) and replace the corresponding screws.



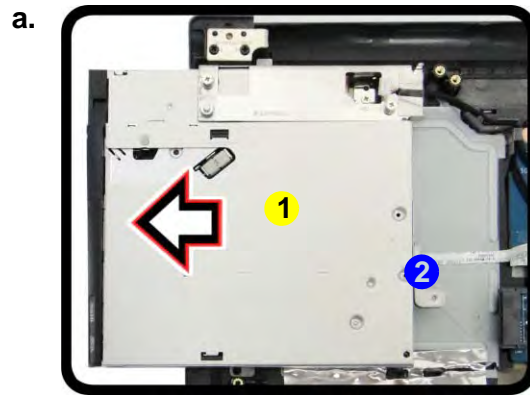
21. Battery

- 2 Screws



## Removing the Optical (CD/DVD) Device

1. Turn **off** the computer, turn it over to remove the battery ([page 2 - 5](#)).
2. Carefully pull out the optical device **1** out of the bay at point **2** ([Figure 3a](#)).
3. Carefully pry the bezel **4** off the optical device at point **3** ([Figure 3b](#)).
4. Separate the bezel **4** and the optical device ([Figure 3c](#)).



*Figure 3*  
**Optical Device  
Removal**

- a. Pull out the optical device.
- b. Pry the bezel off the optical device.
- c. Separate the bezel and optical device



1. Optical Device
4. Bezel

## Disassembly

*Figure 4*  
**Optical Device  
Assembly**

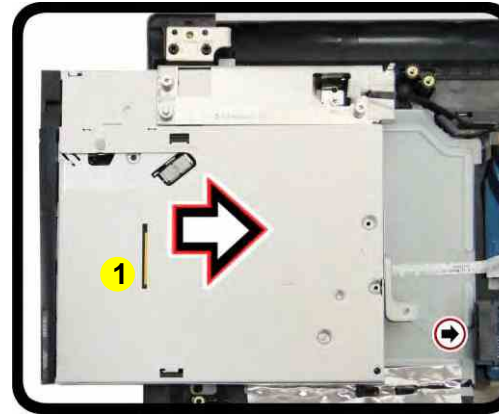
- d. Install the front bezel.  
e. Insert the optical device.  
f. Tighten the screw.

5. Reverse the process to attach the front bezel **4** with the new optical device at point **5** (*Figure 4e*).
6. Insert the new optical device **1** and carefully slide it into the computer (the device only fits one way. DO NOT FORCE IT; The screw holes should line up).
7. Replace the bottom cover and tighten the screw **6** (*Figure 4g*).
8. Restart the computer to allow it to automatically detect the new device.

d.



e.



f.



1. Optical Device
4. Bezel

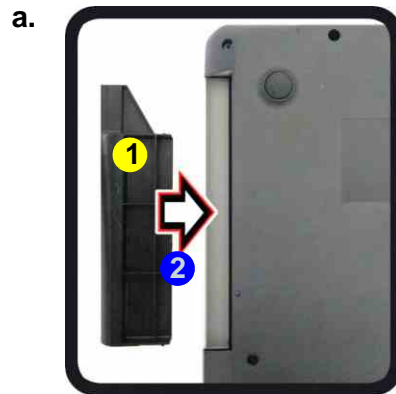
- 1 Screw



# Installing and Removing the Dummy ODD Bezel

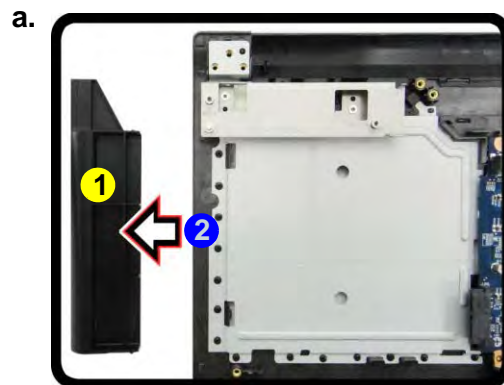
## Installing the Dummy ODD Bezel

1. Insert the dummy ODD bezel **1** to lock it into the bay in the direction of the arrow **2** (*Figure 5a*).



## Removing the Dummy ODD Bezel

1. Turn **off** the computer, turn it over to remove the battery (*page 2 - 5*).
2. Slide the dummy ODD bezel **1** out in the direction of the arrow **2** (*Figure 6a*).
3. Reattach the bottom cover with the top case and replace the corresponding screws.



*Figure 5*  
**Dummy ODD Bezel  
Installation**

- a. Insert the dummy ODD bezel into the ODD bay.

*Figure 6*  
**Dummy ODD Bezel  
Removal**

- a. Remove the dummy ODD bezel from the ODD bay.
- b. Replace the bottom cover and screws.



1. Dummy ODD Bezel

## Disassembly

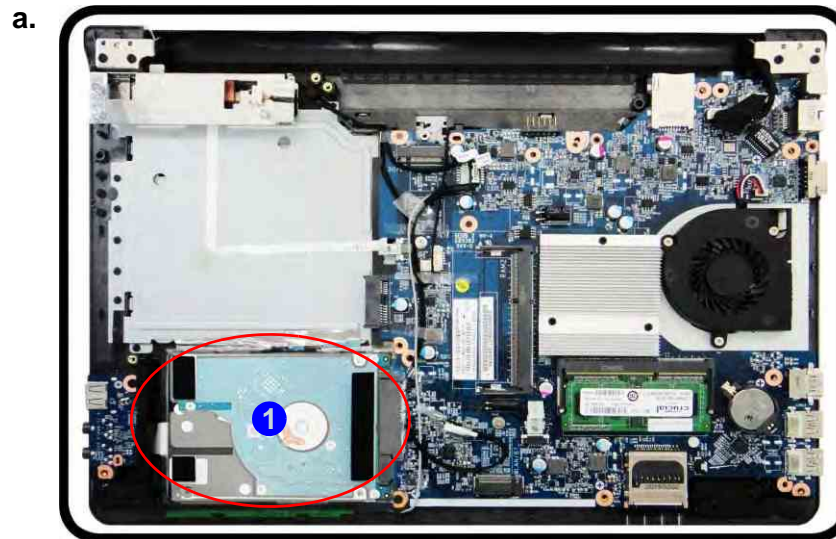
### Removing the Hard Disk Drive

*Figure 7*  
**HDD Assembly  
Removal**

The hard disk drive can be taken out to accommodate other 2.5" serial (SATA) hard disk drives with a height of 7.0mm (h). Follow your operating system's installation instructions, and install all necessary drivers and utilities (as outlined in **Chapter 4 of the User's Manual**) when setting up a new hard disk.

a. Locate the HDD assembly. **Hard Disk Upgrade Process**

1. Turn **off** the computer, turn it over to remove the battery ([page 2 - 5](#)).
2. The hard disk drive will be visible at point **1** ([Figure 7a](#)).



#### HDD System Warning

New HDD's are blank. Before you begin make sure:

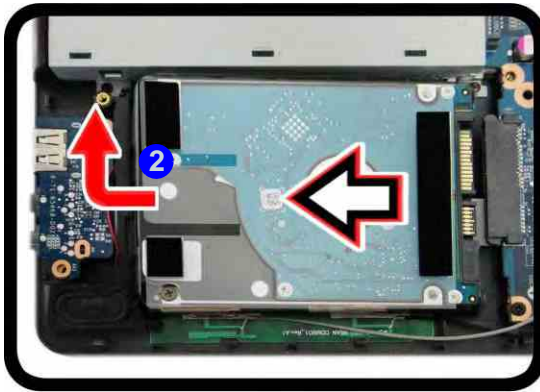
You have backed up any data you want to keep from your old HDD.

You have all the CD-ROMs and FDDs required to install your operating system and programs.

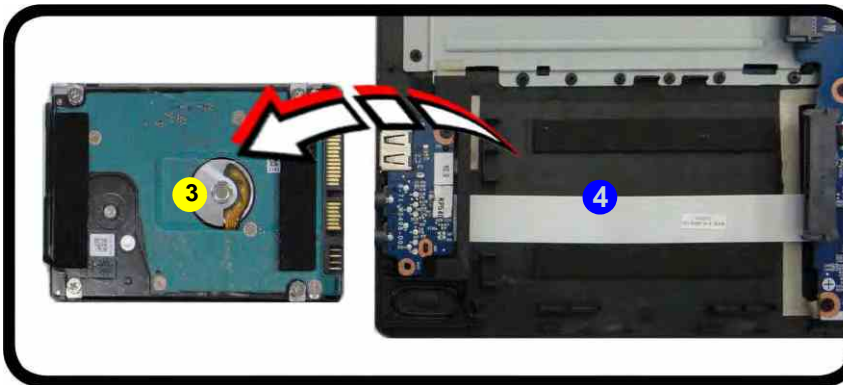
If you have access to the internet, download the latest application and hardware driver updates for the operating system you plan to install. Copy these to a removable medium.

3. Slightly lift and pull the hard disk assembly in the direction of arrow ② (Figure 8b).
4. Lift the hard disk assembly ③ out of the bay ④ (Figure 8c).
5. Remove the screws ⑤ - ⑥ and the adhesive cover ⑦ from the hard disk ⑧ (Figure 8d).
6. Reverse the process to install a new hard disk (do not forget to replace all the screws and bottom cover).

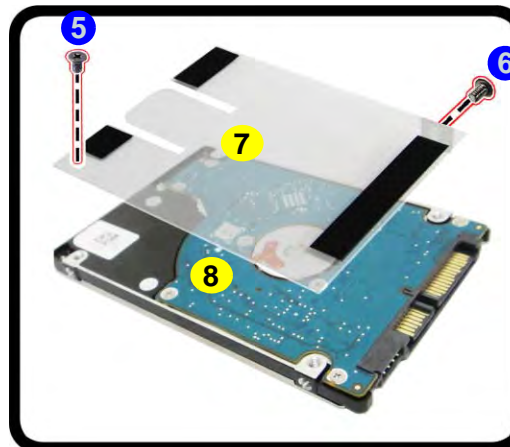
b.



c.



d.



*Figure 8*  
**HDD Assembly  
Removal (cont'd.)**

- b. Slightly lift and pull the HDD assembly in the direction of the arrow.
- c. Lift the HDD assembly out of the bay.
- d. Remove the screws and adhesive cover.



- 3. HDD Assembly
- 7. Adhesive Cover
- 8. HDD
- 2 Screws

## Disassembly

*Figure 9*  
**RAM Module Removal**

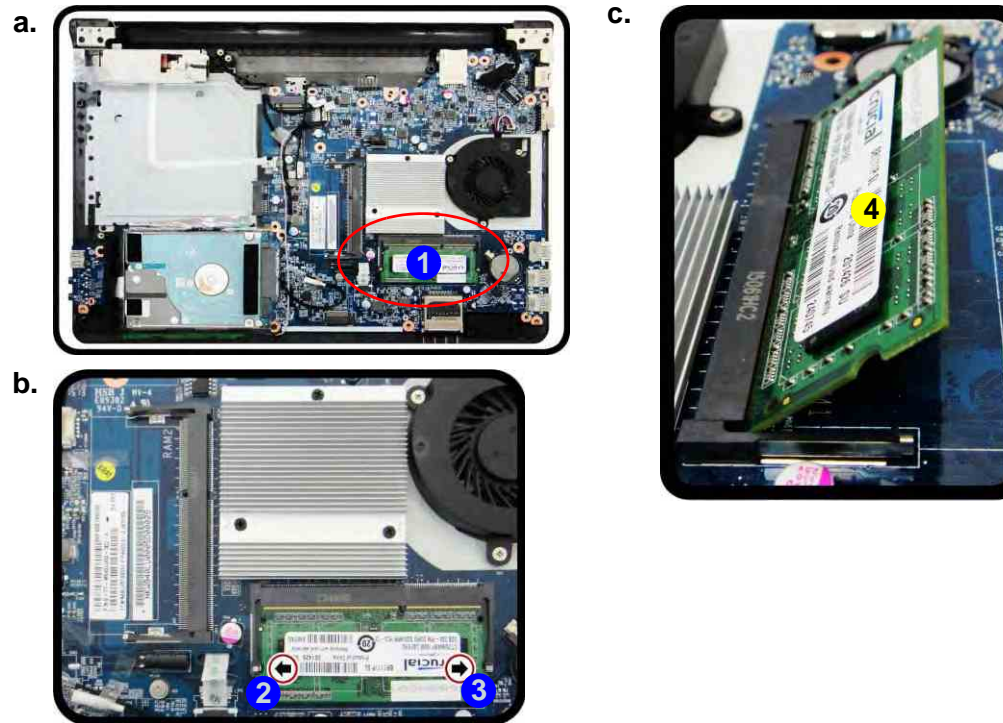
- The RAM modules will be visible at point **1** on the mainboard.
- Pull the release latches.
- Remove the module.

## Removing the System Memory (RAM)

The computer has two memory sockets for 204 pin Small Outline Dual In-line Memory Modules (SO-DIMM) supporting single or dual channel DDR3L depending on the CPU. The main memory can be expanded up to 8GB. The total memory size is automatically detected by the POST routine once you turn on your computer.

### Memory Upgrade Process

- Turn **off** the computer, turn it over to remove the battery ([page 2 - 5](#)).
- The RAM modules will be visible at point **1** on the mainboard ([Figure 9b](#)).
- Gently pull the two release latches (**2** & **3**) on the sides of the memory socket in the direction indicated by the arrows ([Figure 9b](#)). The RAM module **4** will pop-up ([Figure 9c](#)), and you can then remove it.



#### Contact Warning

Be careful not to touch the metal pins on the module's connecting edge. Even the cleanest hands have oils which can attract particles, and degrade the module's performance.



4. RAM Module



#### Single Memory Module Installation

If your computer has a single memory module, then insert the module into the **Channel 0 (JDIMM1 / RAM1)** socket. In this case this is the **horizontal** memory socket.

4. Pull the latches to release the second module if necessary.
5. Insert a new module holding it at about a 30° angle and fit the connectors firmly into the memory slot.
6. The module will only fit one way as defined by its pin alignment. Make sure the module is seated as far into the slot as it will go. DO NOT FORCE IT; it should fit without much pressure.
7. Press the module in and down towards the mainboard until the slot levers click into place to secure the module.
8. Replace the bottom case and the screws (see [page 2 - 5](#)).
9. Restart the computer to allow the BIOS to register the new memory configuration as it starts up.



## Disassembly

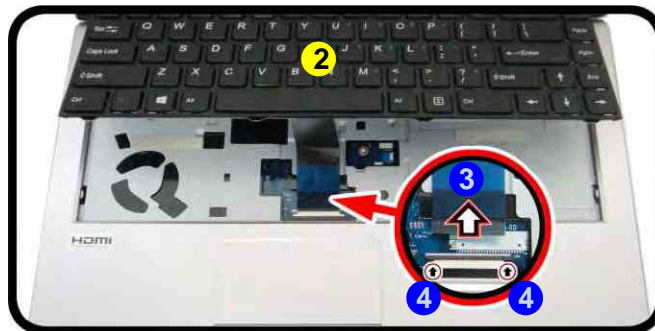
*Figure 10*  
**Keyboard Removal**

- Release the keyboard by pressing at point ①.
  - Disconnect the keyboard ribbon cable from the locking collar socket.
  - Remove the keyboard.
- Turn **off** the computer, turn it over to remove the battery ([page 2 - 5](#)).
  - Press at point ① to release the keyboard ([Figure 10a](#)).
  - Turn the computer over, remove the keyboard ② ([Figure 10b](#)).
  - Carefully lift the keyboard up, being careful not to bend the keyboard ribbon cable ③. Disconnect the keyboard ribbon cable from the locking collar socket ④ ([Figure 10b](#)).
  - Carefully lift up the keyboard ② off the computer ([Figure 10c](#)).
  - Reverse the process to install the keyboard (be careful not to bend the keyboard ribbon cable).

a.



b.



c.



2. Keyboard

## Removing the Wireless LAN Module

1. Turn **off** the computer, turn it over to remove the battery ([page 2 - 5](#)).
2. The Wireless LAN module will be visible at point **1** on the mainboard ([Figure 11a](#)).
3. Carefully disconnect the cables **2** & **3**, and then remove the screw **4** ([Figure 11b](#)).
4. The Wireless LAN module **5** ([Figure 11c](#)) will pop-up, and you can remove it from the computer.



*Figure 11*  
**Wireless LAN  
Module Removal**

- a. Locate the WLAN.
- b. Disconnect the cable and remove the screw.
- c. The WLAN module will pop up and lift it out of the computer.

Note: Make sure you reconnect the antenna cable to the “1 + 2” socket ([Figure 11b](#)).



5. Wireless LAN Module

- 1 Screw

## Disassembly

### Wireless LAN, and Combo Module Cables

Note that the cables for connecting to the antennae on WLAN, WLAN & Bluetooth Combo, 3G and LTE modules are not labelled. The cables/covers (each cable will have either a black or transparent cable cover) are color coded for identification as outlined in the table below.

Module Type	Antenna Type	Cable Color	Cable Cover Type
WLAN/WLAN & Bluetooth Combo	WM 1	Black	Transparent
	WM 2	Gray	
	WM 3	White	
LTE Broadband	LTE 1	Black	Black
	LTE 2	Gray	
3G Broadband	3G 1	Black	Black
	3G 2	Gray	

Cable 1 is usually connected to antenna 1 (Main) on the module, and cable 2 to antenna 2 (Aux).



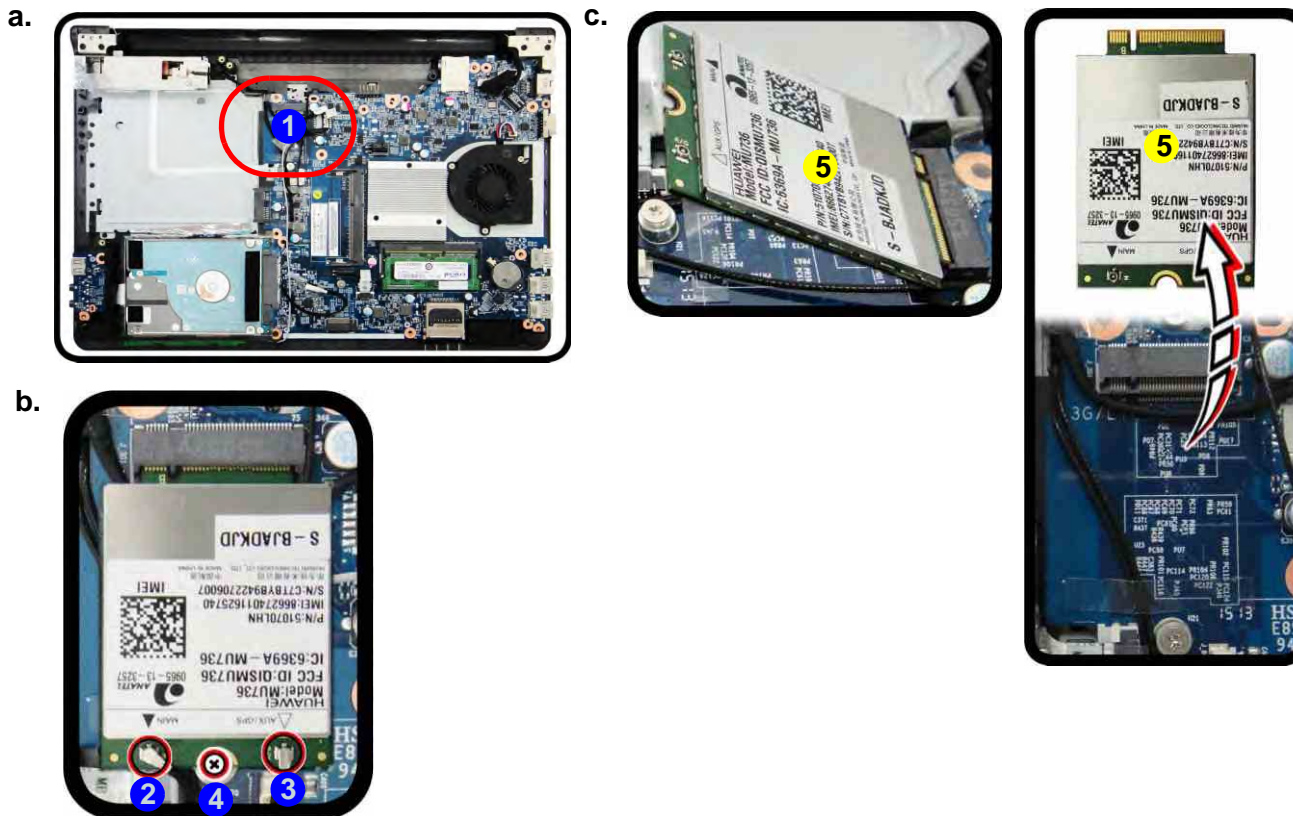
# Removing the 3G Module

## 3G Module Removal Procedure

1. Turn **off** the computer, remove the battery ([page 2 - 5](#)).
2. Locate the module, it is visible at point **1** ([Figure 12a](#)).
3. Carefully disconnect the cables **2** & **3**, and then remove the screw **4** from the module ([Figure 12b](#)).
4. The module **5** will pop-up ([Figure 12c](#)).
5. Lift the module **5** up and off the computer ([Figure 12d](#)).

Figure 12  
3G Module Removal

- Locate the module.
- Disconnect the cables and remove the screw.
- The module will pop-up.
- Lift the module up off the socket.



5. 3G Module
- 1 Screw

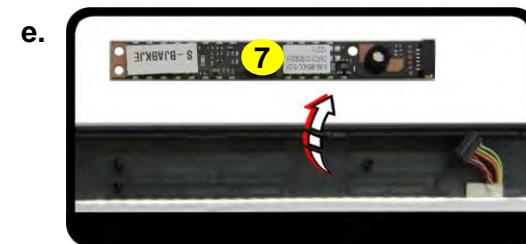
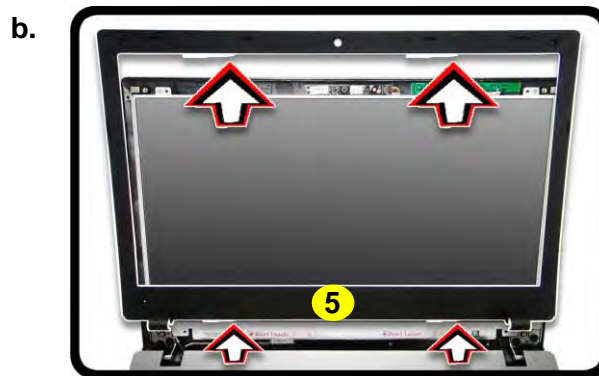
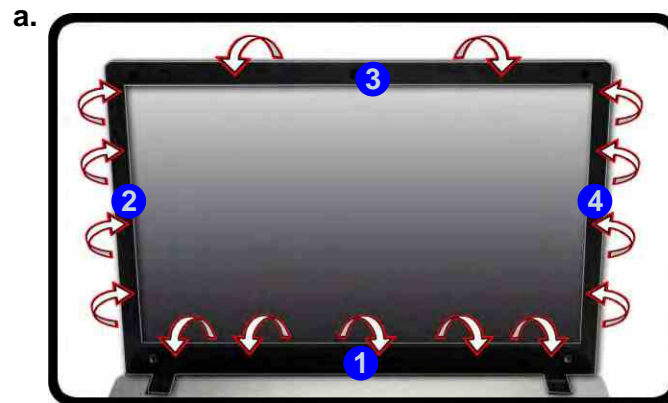
## Disassembly

Figure 13  
CCD Removal

- a. Run your fingers around the inner frame of the LCD panel at the points indicated by the arrows.
- b. Lay the computer down on a flat surface with the top case up forming a 90 degree angle. Push the LCD front panel upwards before carefully lifting it up.
- c. Remove the LCD front cover.
- d. Disconnect the cable.
- e. Remove the CCD module.

## Removing the CCD

1. Turn **off** the computer, turn it over to remove the battery ([page 2 - 5](#)).
2. Run your fingers around the inner frame of the LCD panel at the points as indicated by the arrows **1** - **4**.
3. Lay the computer down on a flat surface with the top case up forming a 90 degree angle. Push the LCD front cover **5** upwards before carefully lifting it up.
4. Remove the LCD front cover **5** ([Figure 13c](#)).
5. Disconnect the cable **6**.
6. Remove the CCD module **7** ([Figure 13e](#)).
7. Reverse the process to install a new CCD module.



5. LCD Front Cover  
7. CCD Module

---

# Appendix A:Part Lists

This appendix breaks down the **W940PU / W945PUQ** series notebook's construction into a series of illustrations. The component part numbers are indicated in the tables opposite the drawings.

**Note:** This section indicates the *manufacturer's* part numbers. Your organization may use a different system, so be sure to cross-check any relevant documentation.

**Note:** Some assemblies may have parts in common (especially screws). However, the part lists DO NOT indicate the total number of duplicated parts used.

**Note:** Be sure to check any update notices. The parts shown in these illustrations are appropriate for the system at the time of publication. Over the product life, some parts may be improved or re-configured, resulting in *new* part numbers.

## Part List Illustration Location

The following table indicates where to find the appropriate part list illustration.

*Table A - 1*  
**Part List Illustration  
Location**

Part	W940PU	W945PUQ
Top (Stand)	<i>page A - 3</i>	
Top		<i>page A - 4</i>
Bottom - ODD	<i>page A - 5</i>	
Bottom - Dummy	<i>page A - 6</i>	
Bottom		<i>page A - 7</i>
LCD	<i>page A - 8</i>	<i>page A - 9</i>
DVD Dual Drive	<i>page A - 10</i>	<i>page A - 11</i>
HDD	<i>page A - 12</i>	

\_\_\_\_\_



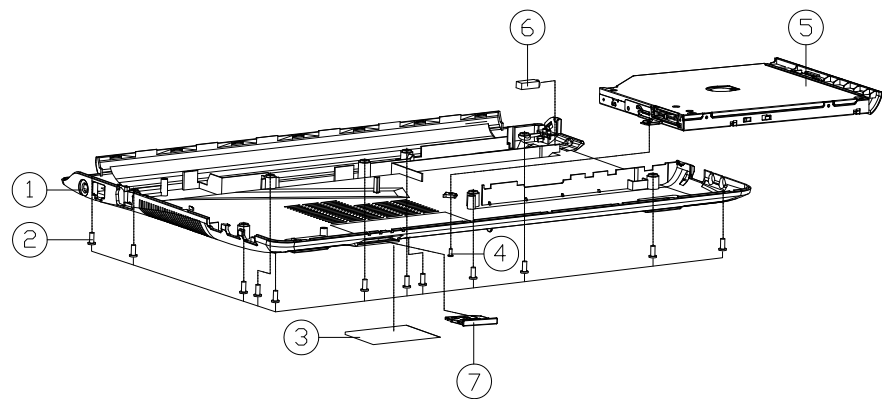
## A.Part Lists

## A. Part Lists

This exploded view diagram illustrates the assembly of a laptop chassis. The components are numbered 1 through 31, indicating the sequence of assembly. The main parts shown are the top cover (1), keyboard (2), palm rest/trackpad area (3), and the bottom cover (4). Other components include the battery (5), various internal panels (15, 16, 17, 20, 21, 22, 23, 24, 25, 26, 27), the main system board (6), and various connectors and cables (7, 8, 9, 10, 11, 12, 13, 14, 18, 19, 28, 29, 30, 31). The diagram shows how these parts fit together to form the complete laptop chassis.

[illegible]

Bottom - ODD (W940PU)



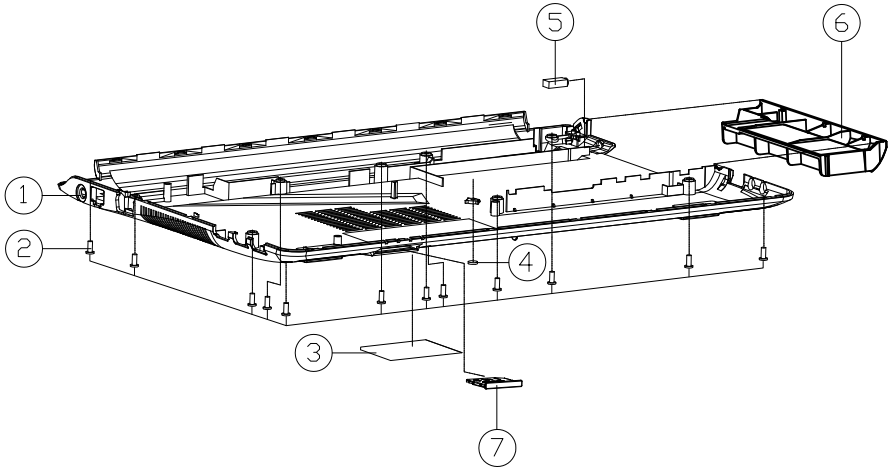
ITEM	PART NAME	PART NO	REMARK
1	BOTTOM CASE MODULE FOR W940LU	6-39-W94L3-010	
1	BOTTOM CASE MODULE FOR W940LU-C	6-39-W94L3-010-C	
2	SCREW M2.5*6L K BZ ICT NY	6-35-82125-6RA	
3	PRODUCT LABEL FOR W940LU	6-45-W940LU03-010	
3	PRODUCT LABEL FOR W940JU	6-45-W940JU03-010	
3	PRODUCT LABEL FOR W940PU	6-45-W940PU03-010	
3	PRODUCT LABEL(MOUSE/NOTEBOOK COMPUTER) W940LU	6-45-W942LU03-7J0	
4	SCREW M2*4L KI BZ ICT NY	6-35-B6120-4RA	
5	SATA DVD SUPER MULTI ASS'Y (OPTION)	6-79-W940TU00-000	<OPTION>
5	SATA BLU-RAY COMBO ASS'Y (OPTION)	6-79-W940SU1W-000	<OPTION>
5	SATA DVD SUPER MULTI ASS'Y (OPTION)	6-79-W942SV00-010	<OPTION>
5	SATA DVD SUPER MULTI ASS'Y (OPTION)	6-79-W940AU00-010	<OPTION>
5	W/O ODD ASS'Y W940TU	6-79-W940TU0Z-000	<OPTION>
6	TV RUBBER (SILICON HARDNESS 60 BLACK) FOR W940TU	6-47-W9403-041	FOR W/O TV TUNER
7	DUMMY 3IN1 NON PUSH TYPE PC+ABS (C7230P-7010C) W9700JW	6-42-W970B-030	

Figure A - 3  
Bottom - ODD  
(W940PU)



Bottom - Dummy (W940PU)

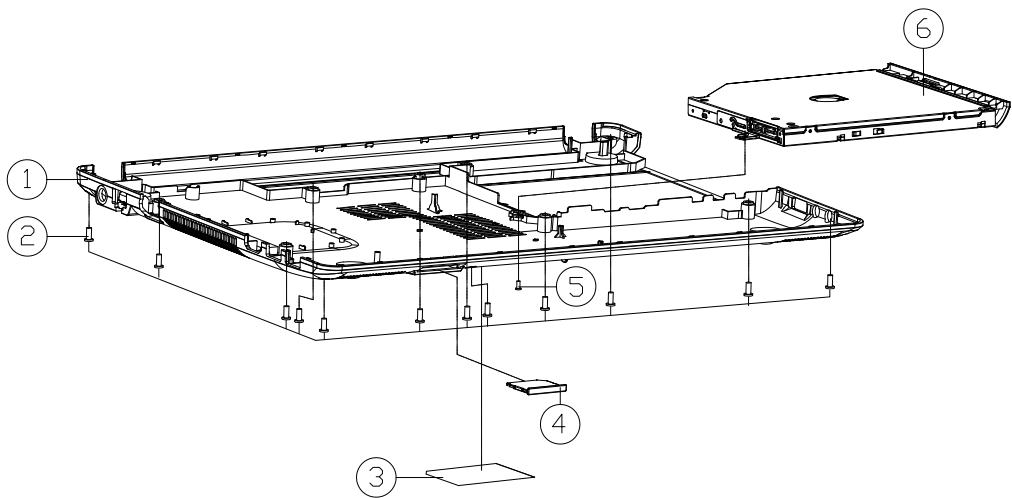
Figure A - 4  
Bottom - Dummy  
(W940PU)



ITEM	PART NAME	PART NO	REMARK
1	BOTTOM CASE MODULE FOR W940LU	6-39-W94L3-010	
1	BOTTOM CASE MODULE FOR W940LU-C	6-39-W94L3-010-C	
2	SCREW M2.5*6L K BZ ICT NY	6-35-82125-6RA	
3	PRODUCT LABEL FOR W940LU	6-45-W940LU03-010	
3	PRODUCT LABEL FOR W940JU	6-45-W940JU03-010	
3	PRODUCT LABEL FOR W940PU	6-45-W940PU03-010	
3	PRODUCT LABEL(MOUSE/NOTEBOOK/COMPUTER) W942LU	6-45-W942LU03-7J0	
4	ODD RUBBER (SILICON HARDNESS 60 BLACK) W940TU	6-47-W940Z-010	
5	TV RUBBER (SILICON HARDNESS 60 BLACK) FOR W940TU	6-47-W9403-041	
6	ODD DUMMY TNEJNPCHRS TN3715BX W940TU	6-42-W940Z-041	
7	DUMMY 3IN1 NON PUSH TYPE PC-HBS (C7230P-700D) W970SUW	6-42-W970B-030	



Bottom (W945PUQ)

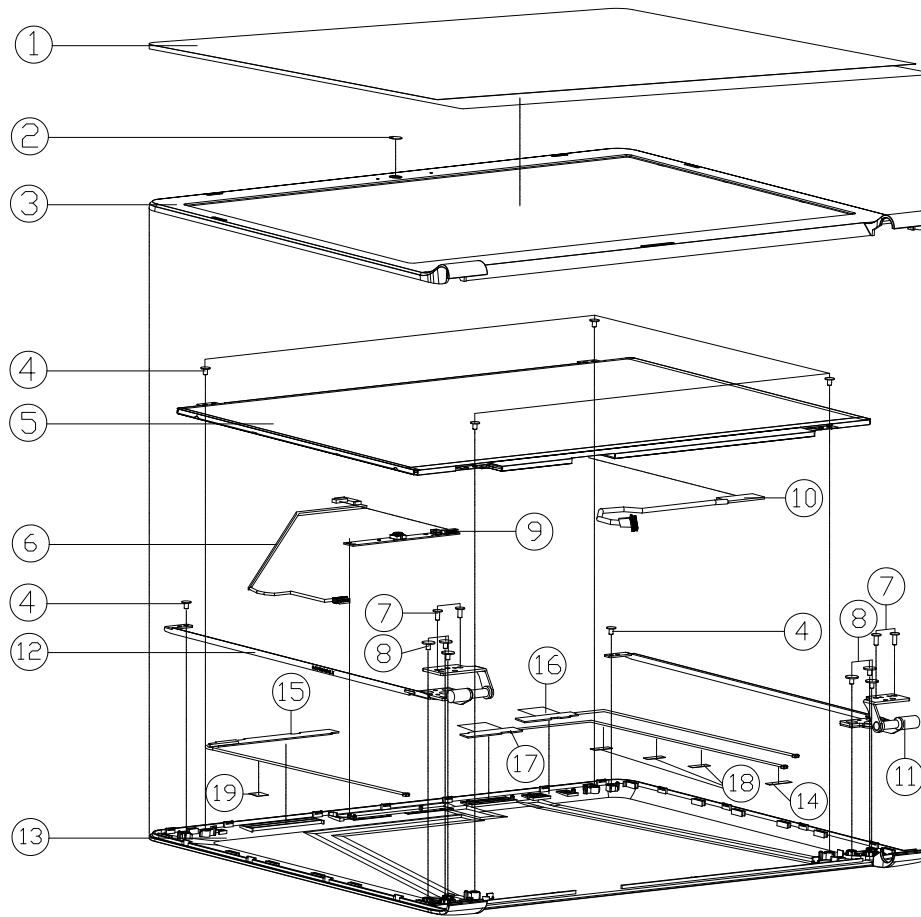


ITEM	PART NAME	PART NO	REMARK
1	BOTTOM CASE MODULE W945KUQ	6-39-W9453-011	
1	BOTTOM CASE MODULE W945KUQ-C	6-39-W9453-011-C	
1	BOTTOM CASE MODULE W945TUQ	6-39-W9453-T11	
1	BOTTOM CASE MODULE W945TUQ	6-39-W9453-T12	
2	SCREW M2.5*6L K BZ ICT NY	6-35-B2125-6RA	
3	PRODUCT LABEL FOR W945KUQ	6-45-W945KUQ3-010	
3	PRODUCT LABEL FOR W945TUQ	6-45-W945TUQ3-010	
3	PRODUCT LABEL FOR W945SUW	6-45-W945SUW3-010	
3	PRODUCT LABEL FOR W945SUY	6-45-W945SUY3-010	
3	PRODUCT LABEL FOR W945AUQ	6-45-W945AUQ3-010	
3	PRODUCT LABEL FOR W945LUQ	6-45-W945LUQ3-010	
3	PRODUCT LABEL FOR W945JUQ	6-45-W945JUQ3-010	
3	PRODUCT LABEL FOR W945BUQ	6-45-W945BUQ3-010	
3	PRODUCT LABEL FOR W945PUQ	6-45-W945PUQ3-010	
4	DUMMY 3MM HEN PUSH TYPE PC-ABS (CZ22P-PIED) V9700W	6-42-W9708-030	
5	SCREW M2*4L KI BZ ICT NY	6-35-B6120-4RA	
6	SATA DVD SUPER MULTI ASS'Y (OPTION)	6-79-W945AUQ0-001	(OPTION)
6	SATA DVD SUPER MULTI ASS'Y (OPTION)	6-79-W945KUQ0-000	(OPTION)
6	SATA BLU-RAY COMBO ASS'Y (OPTION)	6-79-W945AUQW-001	(OPTION)
6	SATA BLU-RAY COMBO ASS'Y (OPTION)	6-79-W945SUWV-010	(OPTION)
6	SATA BLU-RAY COMBO ASS'Y (OPTION)	6-79-W945SUYV-010	(OPTION)
6	W/O ODD ASS'Y W945KUQ	6-79-W945KUQ2-000	(OPTION)

Figure A - 5  
Bottom  
(W945PUQ)

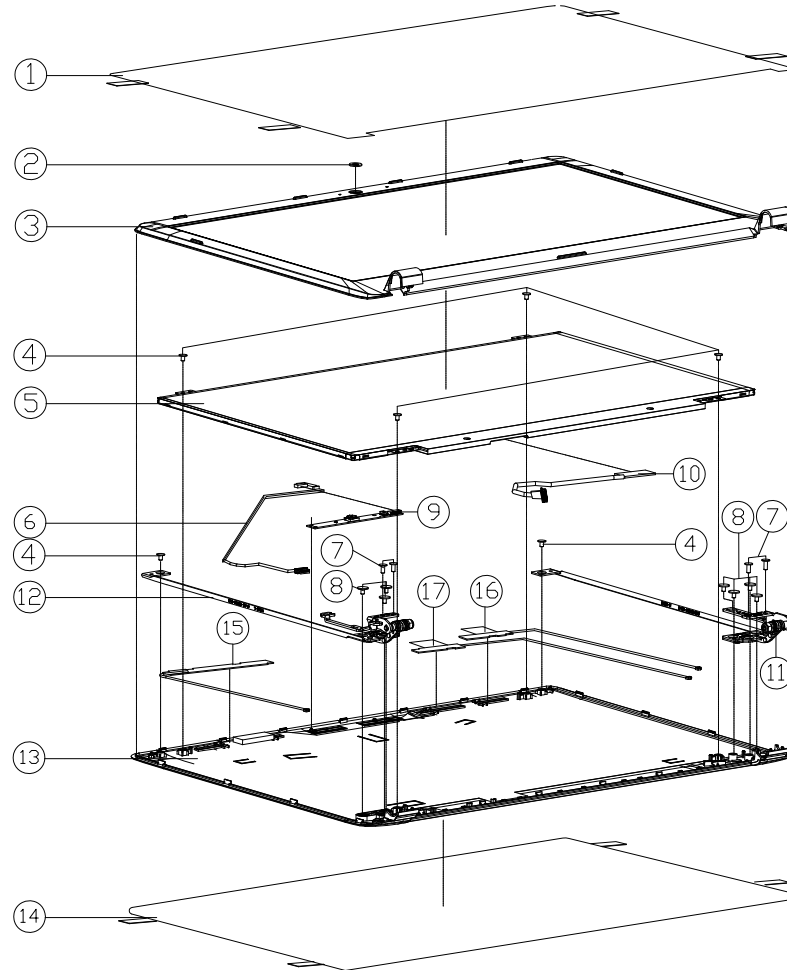
# LCD (W940PU)

Figure A - 6  
LCD (W940PU)



ITEM	PART NAME	PART NO	REMARK
1	LCD PROTECT MYLAR BOPP N240JU	6-40-N24J1-040	
2	CCD LENS (VIEWING AREA 4MMX6MM)W940TU	6-42-W9401-020	OPTION
3	LCD FRONT COVER MODULE (CHANGE)W940TU	6-39-W9401-012	
3	LCD FRONT COVER MODULE (MOUSE/MOUSE COMPUTER)W940TU	6-39-W9401-012-M3	
3	LCD FRONT COVER MODULE (D-MIC) W940JU	6-39-W9401-014	
4	SCREW M2X3.0L KI NI ICT NY (D0=M4.5,D1=0.4)	6-35-B1120-3RE	
5	LCD 14.0" HD EDP/CLARE TYPE BDE H840W5-301 (LED) 3.6MM	6-50-J8136-Z01	
5	LCD 14.0" HD+ CHINEE N440GE-EA2 (LED) 3.0MM X EDP	6-50-JA130-D00	
5	LCD 14.0" HD (CEP) CLARE TYPE AU B440T034 (LED) 3.6MM	6-50-J8136-G12	
5	LCD 14.0" HD (CEP) INNOVUX N440GE-EA3 (LED) 3.0 MM	6-50-J8130-V00	
5	LCD 14.0" HD EDP CLARE TYPE LP440W8-TP22 (LED) 3.6MM	6-50-J8136-LOG	
5	LCD 14.0" FHD IPS (CEP) LG LP140W1T-SPK1 (LED) 3.0MM	6-50-JB230-L01	
5	LCD 14.0" FHD IPS (CEP) LG LP140W1F6-SP02 (M4) (LED) 3.0MM	6-50-JB230-L07	
5	LCD 14.0" FHD (CEP) INNOVUX N440GE-EA4 (LED) 3.0MM	6-50-JB230-V00	
5	LCD 14.0" HD LG LP140W1H8-TL-B1 (LED) 3.6MM	6-50-J8136-L0F	
5	LCD 14.0" HD/ GT/ EDP AU B440T039 (LED) 3.6MM	6-50-J8A36-G000	
6	WIRE CABLE FOR CCD 8P8 305MM 3.3V 8PIN (CDS) W940TU	6-43-W9401-021-1	
7	SCREW M2.5X4L K1 CT NY	6-35-82125-6RA	ONLY FOR -012
7	SCREW M2.5X4L K1 CT NY (D=0.5 D=4.5) BK/Z ICT	6-35-B6125-4R0	ONLY FOR POSITIVO
8	SCREW M2X2L KI BK/Z ICT NY(08,T=0.6)	6-35-B6120-2RE	
9	INC CAMERA CDSM F10 (CONVEX) 30K 10MM H-74 W940TU F1000 W450 W940TU	6-88-W940C-4902	OPTION
9	INC CAMERA CDSM F10 (CONVEX) 30K 10MM H-74 W940TU F1000 W450 W940TU	6-88-W977C-5100	OPTION
9	INC CAMERA CDSM F10 (CONVEX) 30K 10MM H-74 W940TU F1000 W450 W940TU	6-88-W940C-5100	OPTION
9	INC CAMERA CDSM F10 (CONVEX) 30K 10MM H-74 W940TU F1000 W450 W940TU	6-88-W51PC-5100	OPTION
9	INC CAMERA CDSM F10 (CONVEX) 30K 10MM H-74 W940TU F1000 W450 W940TU	6-88-N650C-4900	OPTION
9	INC CAMERA CDSM F10 (CONVEX) 30K 10MM H-74 W940TU F1000 W450 W940TU	6-88-W51PC-5110	OPTION
9	INC CAMERA CDSM F10 (CONVEX) 30K 10MM H-74 W940TU F1000 W450 W940TU	6-88-N650C-4910	OPTION
10	WIRE CABLE FOR EDP 17MM 17V 30PIN (CDS) W940TU	6-43-W9401-020-1N	
10	WIRE CABLE FOR LENS 17MM 17V 30PIN (CDS) W940TU	6-43-W9401-011-N	
11	LCD HINGE R (CSK7) (CSUS430) (CHANGE) BRACKET W940TU	6-33-W9401-0R4	
12	LCD HINGE L (CSK7) (CSUS430) (CHANGE) BRACKET W940TU	6-33-W9401-0L4	
13	LCD BACK COVER MODULE W940TU	6-39-W9401-022	
13	LCD BACK COVER MODULE W940TU-C	6-39-W9401-022-C	
13	LCD BACK COVER MODULE (MOUSE/MOUSE COMPUTER) W940TU	6-39-W94S1-021-M	
13	LCD BACK COVER MODULE W942SV	6-39-W94S1-021	
14	TAPE MYLAR TRANSPARENT (20X10X0.05) P180MM	6-40-P1803-020	
15	ANTENNA PEBA WLAN WGT W42 PCB 24G/5G/2.4G W42-030MM W940TU	6-23-7W94L-030	
16	ANTENNA PEBA WLAN WGT W42 PCB 24G/5G/2.4G W42-030MM W940TU	6-23-7W94L-011	
17	ANTENNA PEBA WLAN WGT W42 PCB 24G/5G/2.4G W42-030MM W940TU	6-23-7W94L-021	
18	TAPE MYLAR TRANSPARENT (30X5X0.05) W25H1PQ	6-40-W25P3-010	
19	TOP CASE MYLAR (TESA 4965) 20X20X0.25T W940JU	6-40-W9S12-010	

\_\_\_\_\_

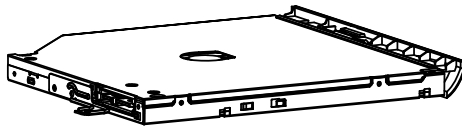
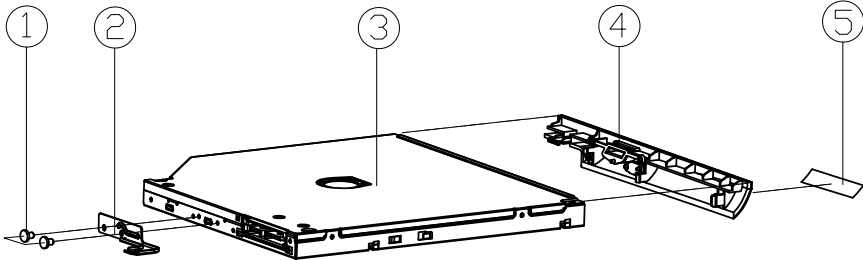


ITEM	PART NAME	PART NO	REMARK
1	LCD FRONT COVER PROTECTION MYLAR (PET-3M65YS) (設置) C450	6-40-C4501-011	
2	CCD LENS PMMA WA50SHQ	6-42-WA501-020	OPTION
3	LCD FRONT COVER MODULE W945KUQ	6-39-W9451-012	
4	SCREW M2*3L KI NI ICT NY (DD=04.5,DT=0.4)	6-35-B1120-3RE	
5	LCD 14.0" HD LG (GLARE TYPE) LP140WH8-TL1A1 (LED) 3.6MM	6-50-J8136-L0E	
5	LCD 14.0" HD EDP(GLARE TYPE) BDE HB140WX1-301 (LED) 3.6MM	6-50-J8136-Z01	
5	LCD 14.0" HD+ CHIMEI N140FGE-EA2 (LED) 3.0MM ( EDP)	6-50-JA130-D00	
5	LCD 14.0" HD (EDP) GLARE TYPE INNOLUX N140BGE-E43 (LED) 3.6MM	6-50-J8136-V03	
5	LCD 14.0" HD (EDP) GLARE TYPE AU B140XTN03.4 (LED) 3.6MM	6-50-J8136-G12	
5	LCD 14.0" FHD IPS (EDP) LG LP140WF6-SPB2 0N0 (LED) 3.0MM	6-50-JB230-L07	
5	LCD 14.0" FHD (EDP) INNOLUX N140HGE-EAA (LED) 3.0MM	6-50-JB230-V00	
5	LCD 14.0" HD LG LP140WH8-TL1B1 (LED) 3.6MM	6-50-J8136-L0F	
5	LCD 14.0" HD/ GT/ EDP AU B140XTN03.9 (LED) 3.6MM	6-50-J8A36-G000	
6	WIRE CABLE FOR CCD 8PB 30CM 3.3V 8PIN (CNLS) W940TU	6-43-W940T-021-1	
7	SCREW M2.5*6L KI BZ ICT NY	6-35-B6125-6RA	
8	SCREW M2*2L KI BK/2 ICT NY(Ø8,T=0.6)	6-35-B6120-2RE	
9	UVC CAMERA CHROMY FOX OPTICS 300K HMDX H6-794 W940TU FWSH WLED W9-MC	6-88-W977C-5100	OPTION
9	UVC CAMERA BISON FOX IMAGING 300K HMDX H6-794 W940TU FWSH WLED W9-MC	6-88-W940C-4902	OPTION
9	UVC CAMERA CHROMY FOX OPTICS 300K HMDX H6-794 W940TU FWSH WLED W9-MC	6-88-W940C-5100	OPTION
9	UVC CAMERA CHROMY FOX OPTICS 300K HMDX H6-794 W940TU FWSH WLED W9-MC	6-88-W51PC-5100	OPTION
9	UVC CAMERA BISON FOX IMAGING 300K HMDX H6-794 W940TU FWSH WLED W9-MC	6-88-N650C-4910	OPTION
10	WIRE CABLE FOR LVDS 1794 19V 30PIN G4LW CON(V04H0-232-HF) W940TU	6-43-W9401-011-N	
10	WIRE CABLE FOR LVDS 1794 19V 30PIN G4LW CON(V04H0-232-HF) W940TU	6-43-W9401-020-IN	
11	HINGE R (SUS430+SK7) STINHER W945KUQ	6-33-W9451-0R1	
12	HINGE L (SUS430+SK7) STINHER W945KUQ	6-33-W9451-0L1	
13	LCD BACK COVER MODULE W945KUQ	6-39-W9451-022	
13	LCD BACK COVER MODULE W945KUQ-C	6-39-W9451-022-C	
14	LCD BACK COVER PROTECT MYLAR PET W945KUQ	6-40-W9451-020	
15	ANTENNA PEKX LITE WGT LITE FOR U700/6150/5510/285/268G L-50MM W945U	6-23-7W945-010	
16	ANTENNA WLAU WGT W1 PCB 24G/5GHZ W1-50MM W940U	6-23-7W94A-010	FOR W945AUC
16	ANTENNA PEKX WLAU WGT W1 PCB 24G/5GHZ W1-50MM W940U	6-23-7W94A-011	FOR W945LUC
17	ANTENNA WLAU WGT W2 PCB 24G/5GHZ W2-60MM W940U	6-23-7W94A-020	FOR W945LUC
17	ANTENNA PEKX WLAU WGT W2 PCB 24G/5GHZ W2-50MM W940U	6-23-7W94L-021	FOR W945LUC

*Figure A - 7*  
**LCD (W945PUQ)**

\_\_\_\_\_

*Figure A - 8*  
**DVD DUAL**  
**(W940PU)**



ITEM	PART NAME	PART NO	REMARK
1	《南港》XS50EV M20X1 KJ NI ICT GY-PATCH	6-35-B1120-3RE	
2	ODD BRACKET (SU50A T=0.50MM) W540EU	6-33-W540Z-010	
3	SHA DR SUPER MALLT S 1/4" OF 35MM-GRINDING NEW 16mm IN DIA DR HOLE	6-85-A088X-L04	FOR PLDS
3	SHA DR SUPER MALLT S 1/4" OF 35MM-GRINDING NEW 16mm IN DIA DR HOLE	6-85-A088X-S02	FOR HLDS
4	ODD BEZEL MODULE W940TU	6-42-W940Z-102	
5	SUPER MALLT ODD BEZEL LABEL (SIZE CHANGE)	6-45-W860G-011	

DVD DUAL (W945PUQ)

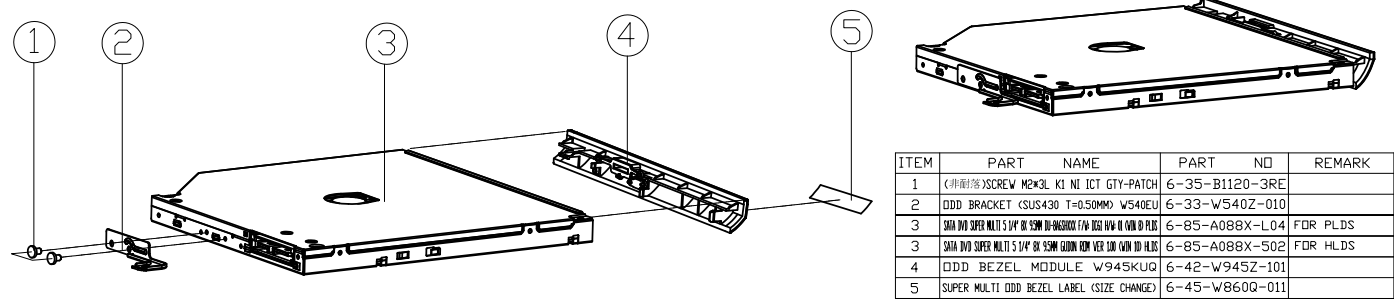
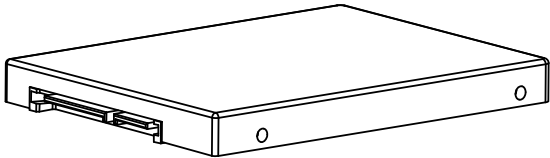
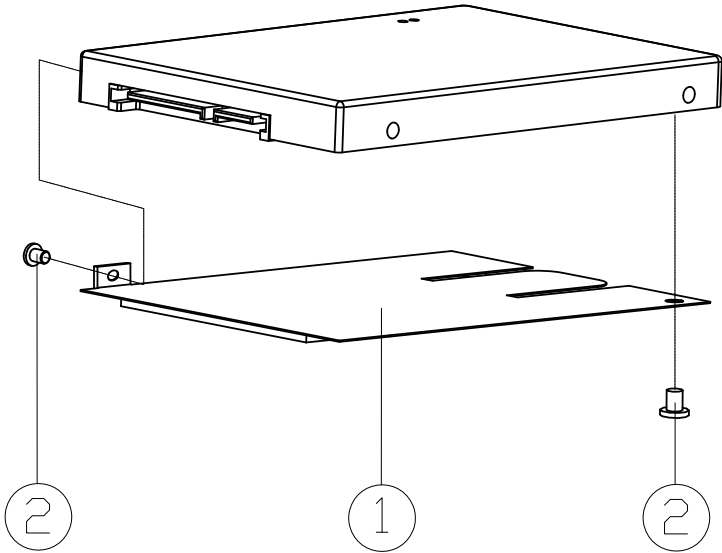


Figure A - 9  
DVD DUAL  
(W945PUQ)

HDD

Figure A - 10  
HDD



ITEM	PART NAME	PART NO	REMARK
1	HDD MYLAR <PET0.25T+CR2030> W940TU	6-40-W940J-010	
2	SCREW M3*2.5L KI NI ICT NY	6-35-B1130-2R5	

# Appendix B: Schematic Diagrams

This appendix has circuit diagrams of the **W940PU / W945PUQ** notebook's PCB's. The following table indicates where to find the appropriate schematic diagram.

Diagram - Page	Diagram - Page	Diagram - Page
<i>System Block Diagram - Page B - 2</i>	<i>Panel Conn - Page B - 15</i>	<i>1.05VA, 1.8VA, 1.24VA - Page B - 28</i>
<i>Processor 1/8 - Page B - 3</i>	<i>RTD2168, CRT - Page B - 16</i>	<i>PWR_VCGI - Page B - 29</i>
<i>Processor 2/8 - Page B - 4</i>	<i>HDMI - Page B - 17</i>	<i>PWR_VNN - Page B - 30</i>
<i>Processor 3/8 - Page B - 5</i>	<i>Audio Codec - Page B - 18</i>	<i>AC_IN, Charger - Page B - 31</i>
<i>Processor 4/8 - Page B - 6</i>	<i>RTL8411B - Page B - 19</i>	<i>Audio Board - Page B - 32</i>
<i>Processor 5/8 - Page B - 7</i>	<i>Fan, Click, CCD Conn - Page B - 20</i>	<i>Power SW Board - Page B - 33</i>
<i>Processor 6/8 - Page B - 8</i>	<i>HDD, ODD, LED, LID, TPM - Page B - 21</i>	<i>Power Sequence - Page B - 34</i>
<i>Processor 7/8 - Page B - 9</i>	<i>NGFF - Page B - 22</i>	
<i>Processor 8/8 - Page B - 10</i>	<i>USB - Page B - 23</i>	
<i>eMMC - Page B - 11</i>	<i>KBC IT8987E - Page B - 24</i>	
<i>DDR SO-DIMM_A - Page B - 12</i>	<i>System Power - Page B - 25</i>	
<i>DDR SO-DIMM_B - Page B - 13</i>	<i>VDD3, VDD5 - Page B - 26</i>	
<i>PS8625 - Page B - 14</i>	<i>PWR_VDDQ, VTT - Page B - 27</i>	

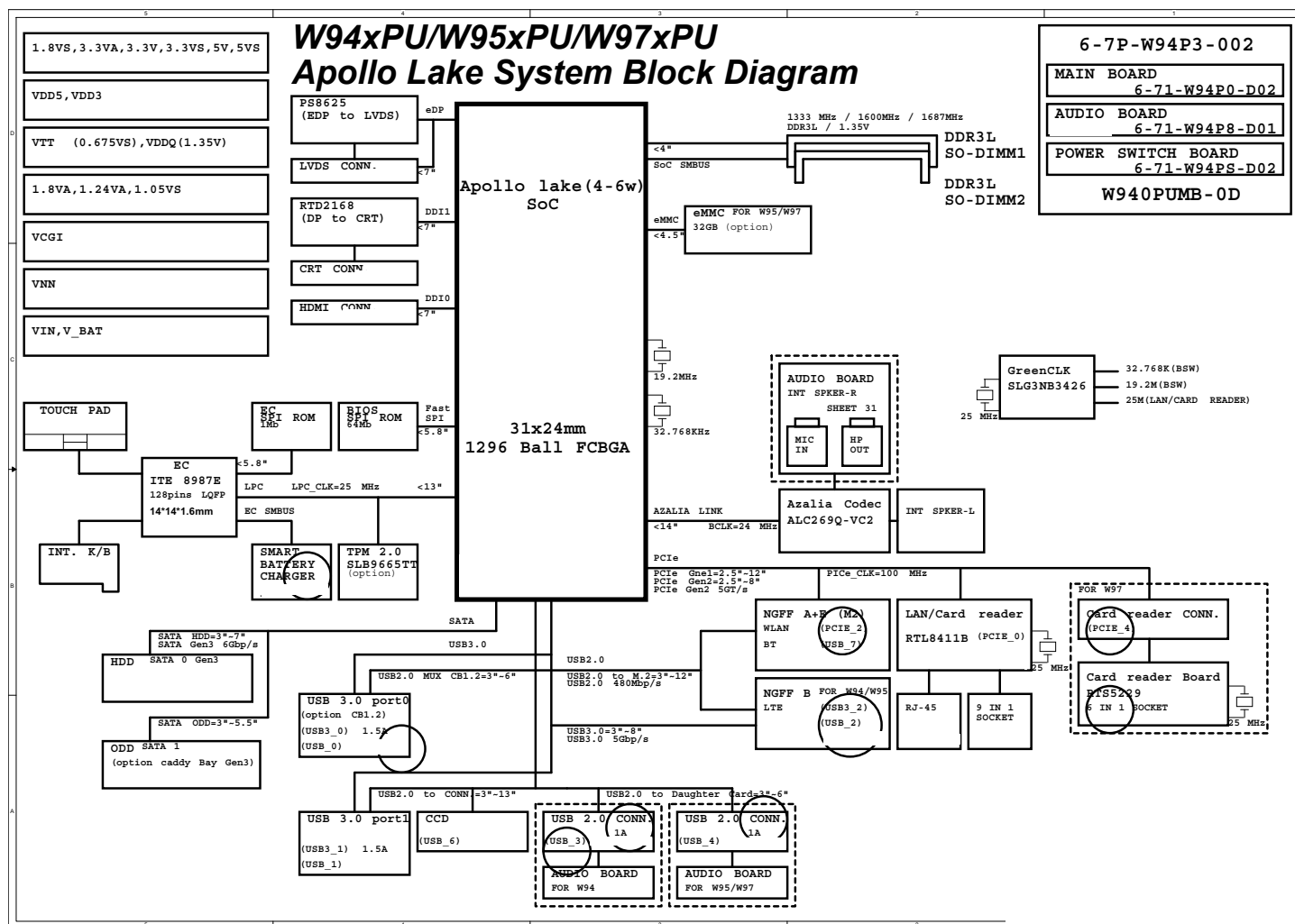
*Table B - 1*  
**SCHEMATIC  
DIAGRAMS**



## Version Note

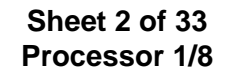
The schematic diagrams in this chapter are based upon version 6-7P-W94P3-002. If your mainboard (or other boards) are a later version, please check with the Service Center for updated diagrams (if required).

**Sheet 1 of 33**  
**System Block**  
**Diagram**



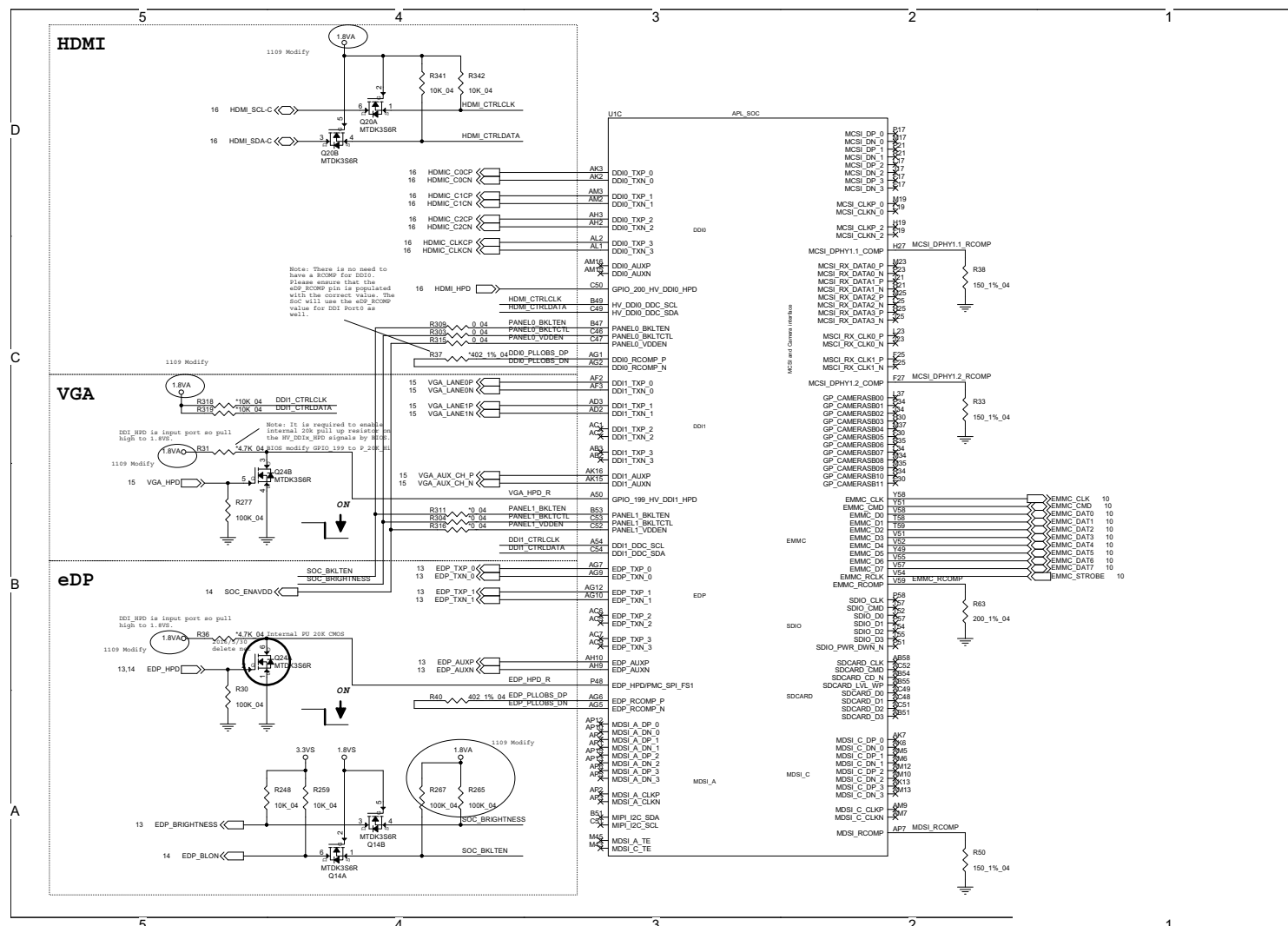


**Processor 1/8 B - 3**



## Processor 2/8

Sheet 3 of 33  
Processor 2/8

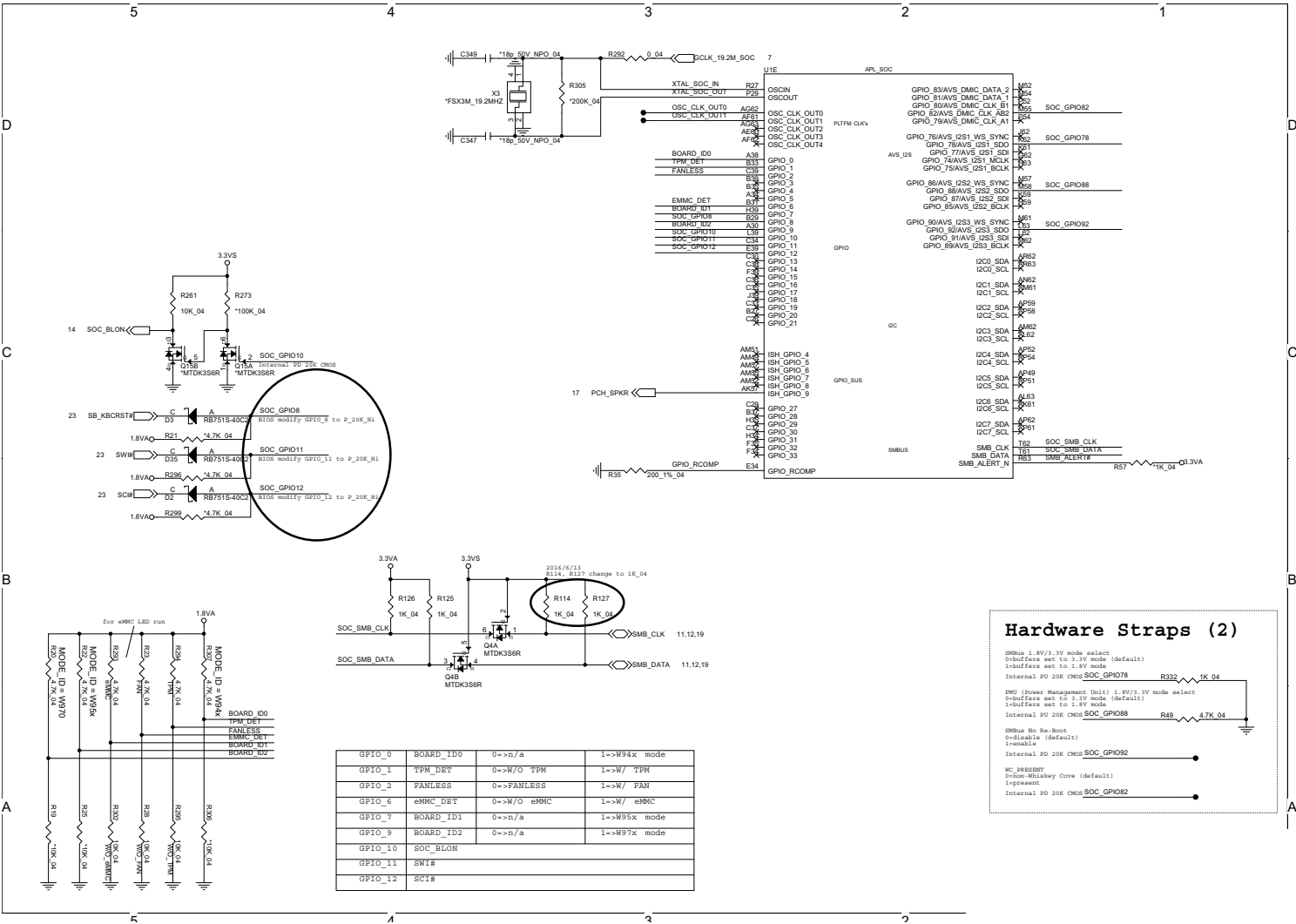


[illegible]

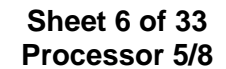
Schematic Diagrams

Processor 4/8

Sheet 5 of 33  
Processor 4/8

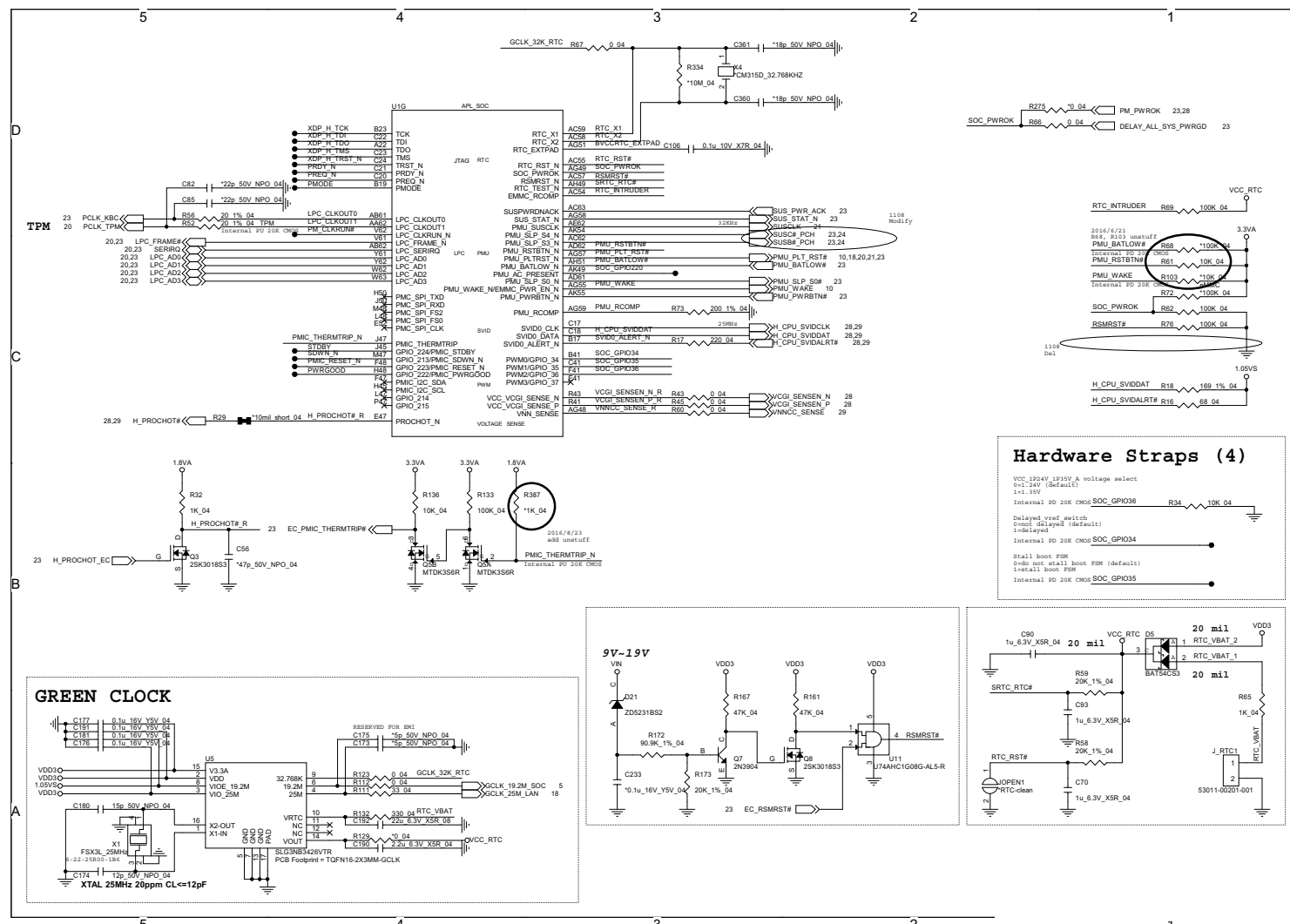


**Processor 5/8 B - 7**



## Processor 6/8

Sheet 7 of 33  
Processor 6/8

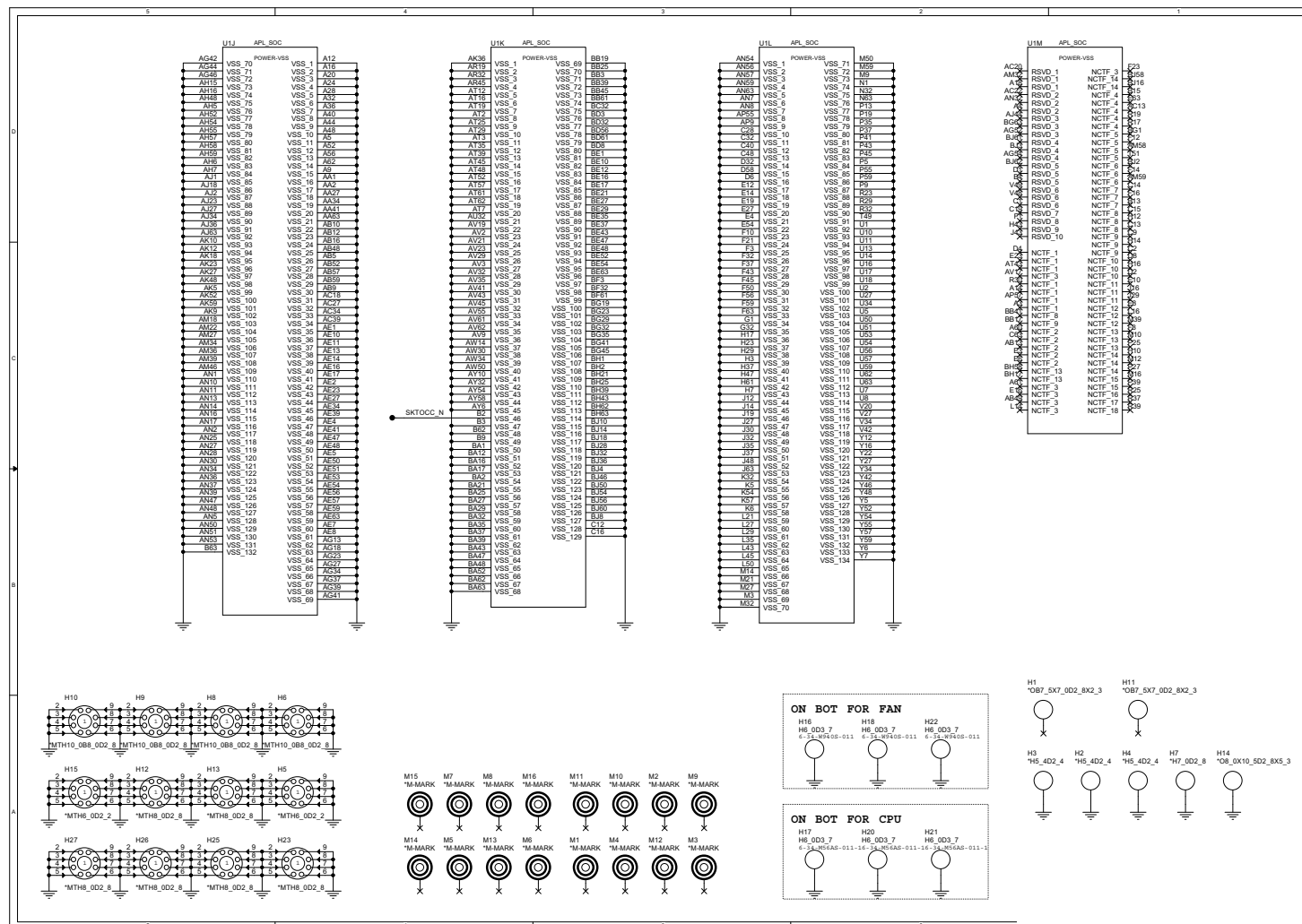






## Processor 8/8

Sheet 9 of 33  
Processor 8/8



**eMMC B - 11**



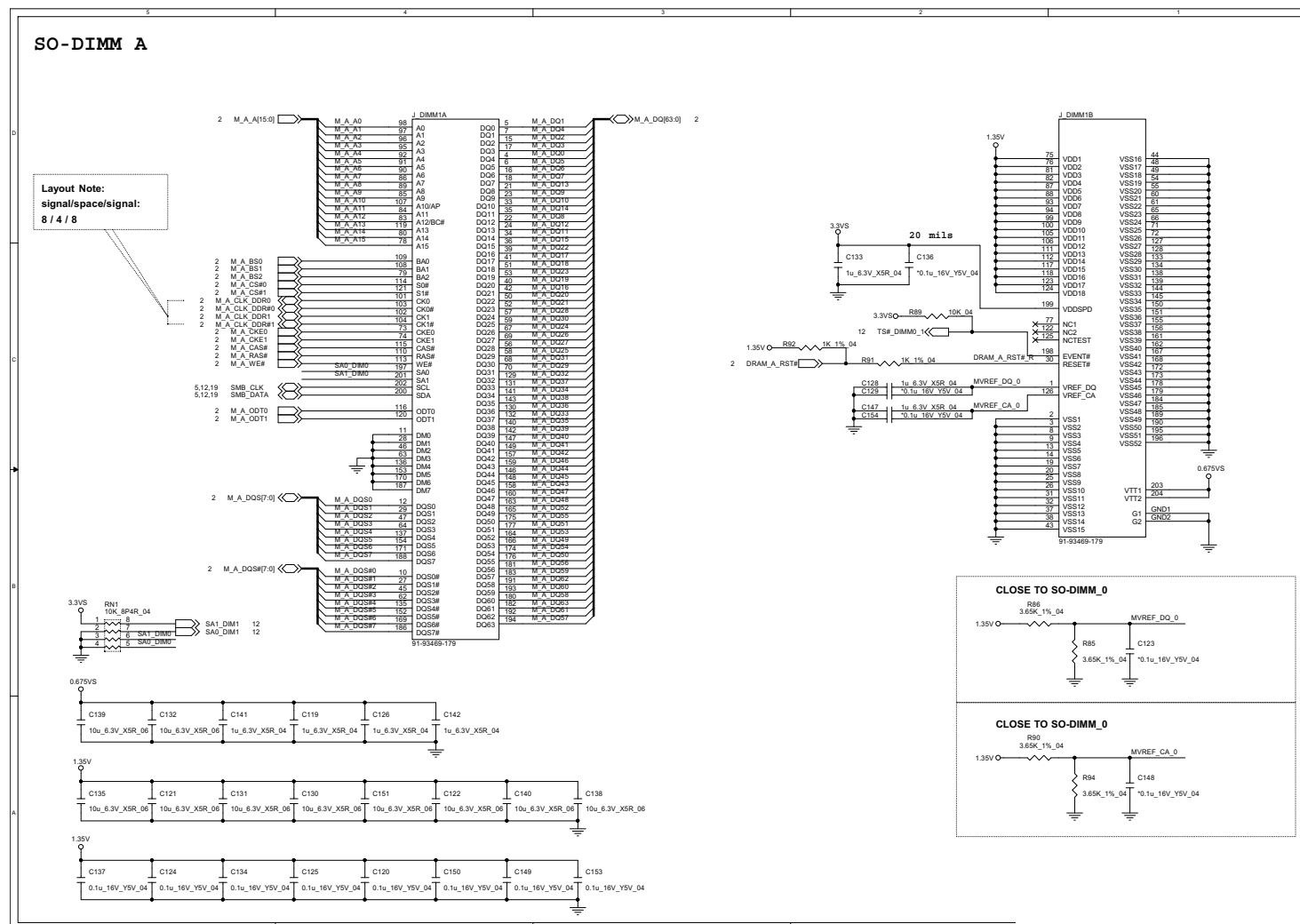
## DDR SO-DIMM\_A

SO-DIMM A

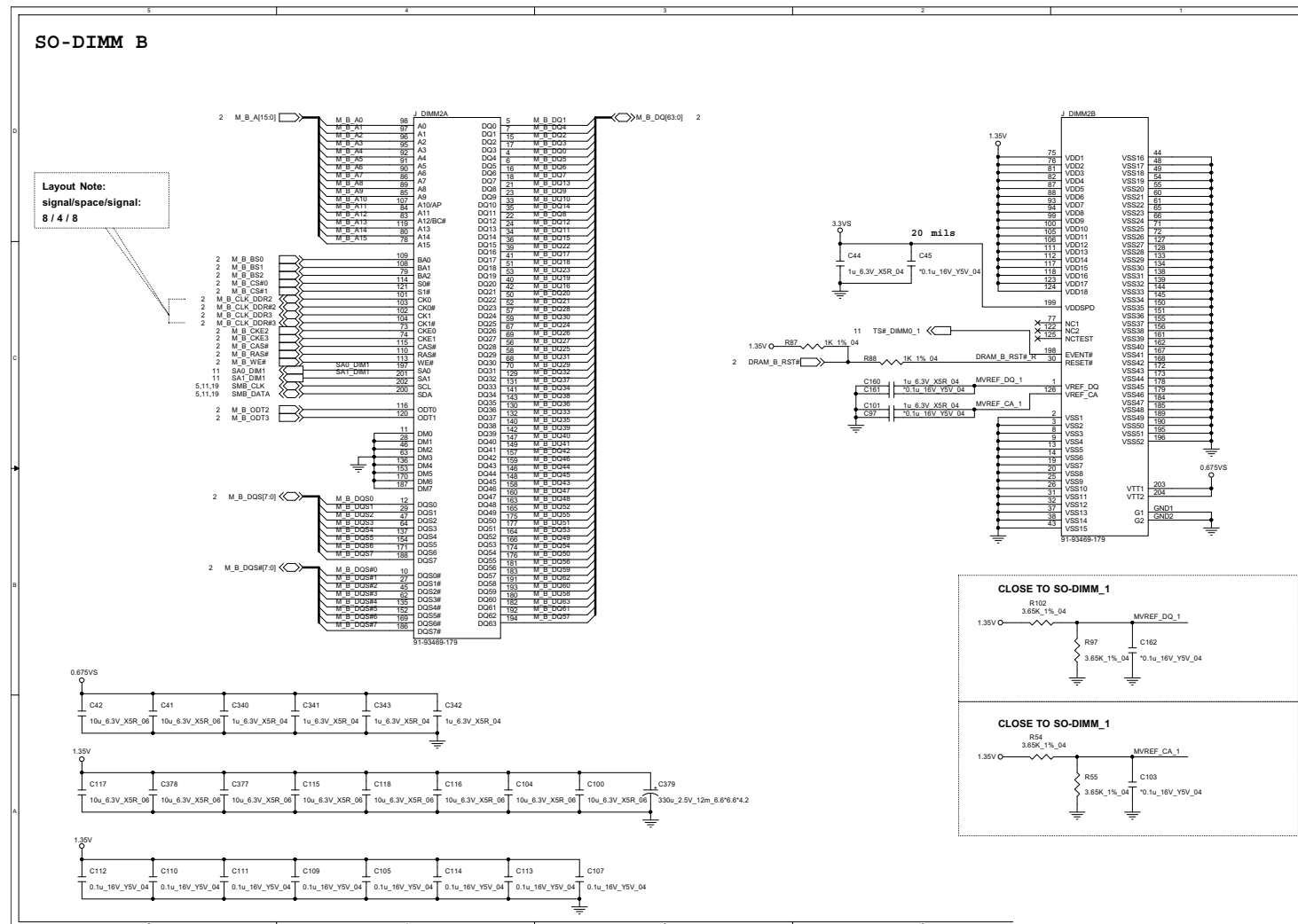
**Layout Note:**  
**signal/space/signal:**  
**8 / 4 / 8**

Sheet 11 of 33  
DDR SO-DIMM\_A

## B.Schematic Diagrams



## DDR SO-DIMM\_B



**PS8625**

Sheet 13 of 33  
PS8625





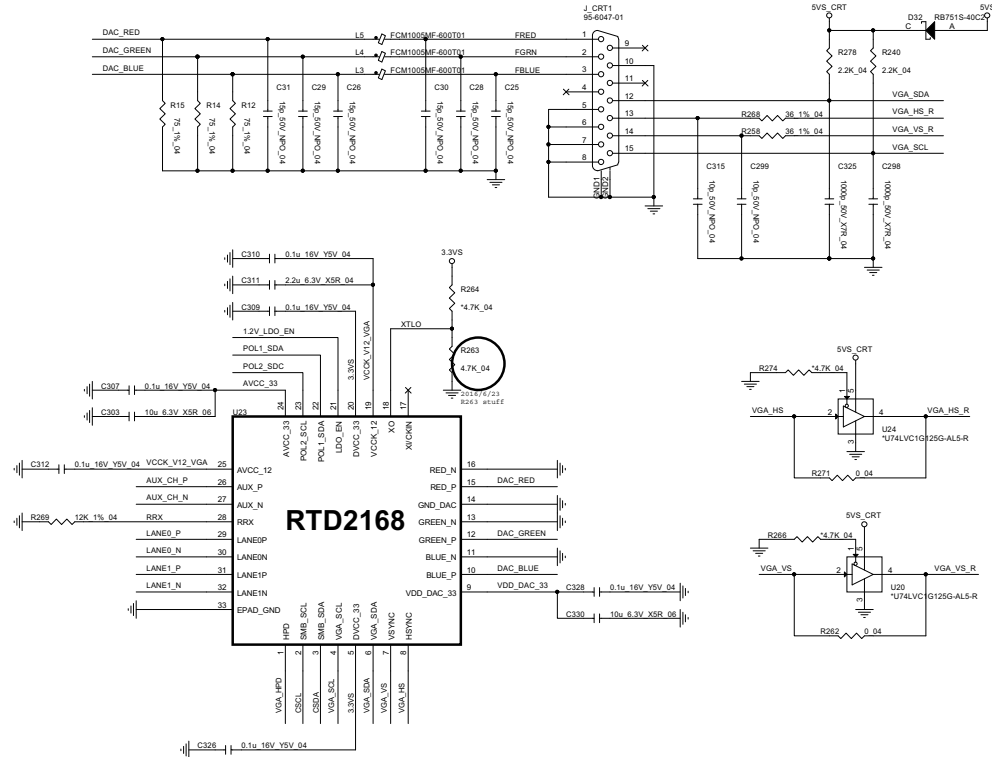
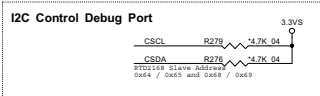
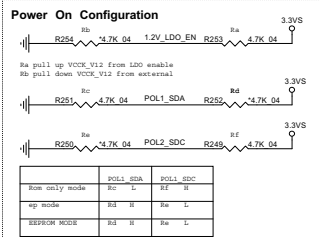
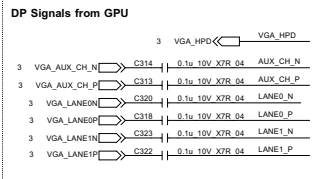
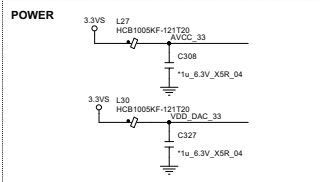
8 9 10 11 12 13 14 15 16 17 18 19 20 21 22 23 24 25 26 27 28 29 30 31 32 33 34 35 36 37 38 39 40 41 42 43 44 45 46 47 48 49 50 51 52 53 54 55 56 57 58 59 60 61 62 63 64 65 66 67 68 69 70 71 72 73 74 75 76 77 78 79 80 81 82 83 84 85 86 87 88 89 90 91 92 93 94 95 96 97 98 99 100 101 102 103 104 105 106 107 108 109 110 111 112 113 114 115 116 117 118 119 120 121 122 123 124 125 126 127 128 129 130 131 132 133 134 135 136 137 138 139 140 141 142 143 144 145 146 147 148 149 150 151 152 153 154 155 156 157 158 159 160 161 162 163 164 165 166 167 168 169 170 171 172 173 174 175 176 177 178 179 180 181 182 183 184 185 186 187 188 189 190 191 192 193 194 195 196 197 198 199 200 201 202 203 204 205 206 207 208 209 210 211 212 213 214 215 216 217 218 219 220 221 222 223 224 225 226 227 228 229 230 231 232 233 234 235 236 237 238 239 240 241 242 243 244 245 246 247 248 249 250 251 252 253 254 255 256 257 258 259 260 261 262 263 264 265 266 267 268 269 270 271 272 273 274 275 276 277 278 279 280 281 282 283 284 285 286 287 288 289 290 291 292 293 294 295 296 297 298 299 300 301 302 303 304 305 306 307 308 309 310 311 312 313 314 315 316 317 318 319 320 321 322 323 324 325 326 327 328 329 330 331 332 333 334 335 336 337 338 339 340 341 342 343 344 345 346 347 348 349 350 351 352 353 354 355 356 357 358 359 360 361 362 363 364 365 366 367 368 369 370 371 372 373 374 375 376 377 378 379 380 381 382 383 384 385 386 387 388 389 390 391 392 393 394 395 396 397 398 399 400 401 402 403 404 405 406 407 408 409 410 411 412 413 414 415 416 417 418 419 420 421 422 423 424 425 426 427 428 429 430 431 432 433 434 435 436 437 438 439 440 441 442 443 444 445 446 447 448 449 450 451 452 453 454 455 456 457 458 459 460 461 462 463 464 465 466 467 468 469 470 471 472 473 474 475 476 477 478 479 480 481 482 483 484 485 486 487 488 489 490 491 492 493 494 495 496 497 498 499 500 501 502 503 504 505 506 507 508 509 510 511 512 513 514 515 516 517 518 519 520 521 522 523 524 525 526 527 528 529 530 531 532 533 534 535 536 537 538 539 540 541 542 543 544 545 546 547 548 549 550 551 552 553 554 555 556 557 558 559 560 561 562 563 564 565 566 567 568 569 570 571 572 573 574 575 576 577 578 579 580 581 582 583 584 585 586 587 588 589 590 591 592 593 594 595 596 597 598 599 600 601 602 603 604 605 606 607 608 609 610 611 612 613 614 615 616 617 618 619 620 621 622 623 624 625 626 627 628 629 630 631 632 633 634 635 636 637 638 639 640 641 642 643 644 645 646 647 648 649 650 651 652 653 654 655 656 657 658 659 660 661 662 663 664 665 666 667 668 669 670 671 672 673 674 675 676 677 678 679 680 681 682 683 684 685 686 687 688 689 690 691 692 693 694 695 696 697 698 699 700 701 702 703 704 705 706 707 708 709 710 711 712 713 714 715 716 717 718 719 720 721 722 723 724 725 726 727 728 729 730 731 732 733 734 735 736 737 738 739 740 741 742 743 744 745 746 747 748 749 750 751 752 753 754 755 756 757 758 759 760 761 762 763 764 765 766 767 768 769 770 771 772 773 774 775 776 777 778 779 780 781 782 783 784 785 786 787 788 789 790 791 792 793 794 795 796 797 798 799 800 801 802 803 804 805 806 807 808 809 810 811 812 813 814 815 816 817 818 819 820 821 822 823 824 825 826 827 828 829 830 831 832 833 834 835 836 837 838 839 840 841 842 843 844 845 846 847 848 849 850 851 852 853 854 855 856 857 858 859 860 861 862 863 864 865 866 867 868 869 870 871 872 873 874 875 876 877 878 879 880 881 882 883 884 885 886 887 888 889 890 891 892 893 894 895 896 897 898 899 900 901 902 903 904 905 906 907 908 909 910 911 912 913 914 915 916 917 918 919 920 921 922 923 924 925 926 927 928 929 930 931 932 933 934 935 936 937 938 939 940 941 942 943 944 945 946 947 948 949 950 951 952 953 954 955 956 957 958 959 960 961 962 963 964 965 966 967 968 969 970 971 972 973 974 975 976 977 978 979 980 981 982 983 984 985 986 987 988 989 990 991 992 993 994 995 996 997 998 999 1000

## Schematic Diagrams

## RTD2168, CRT

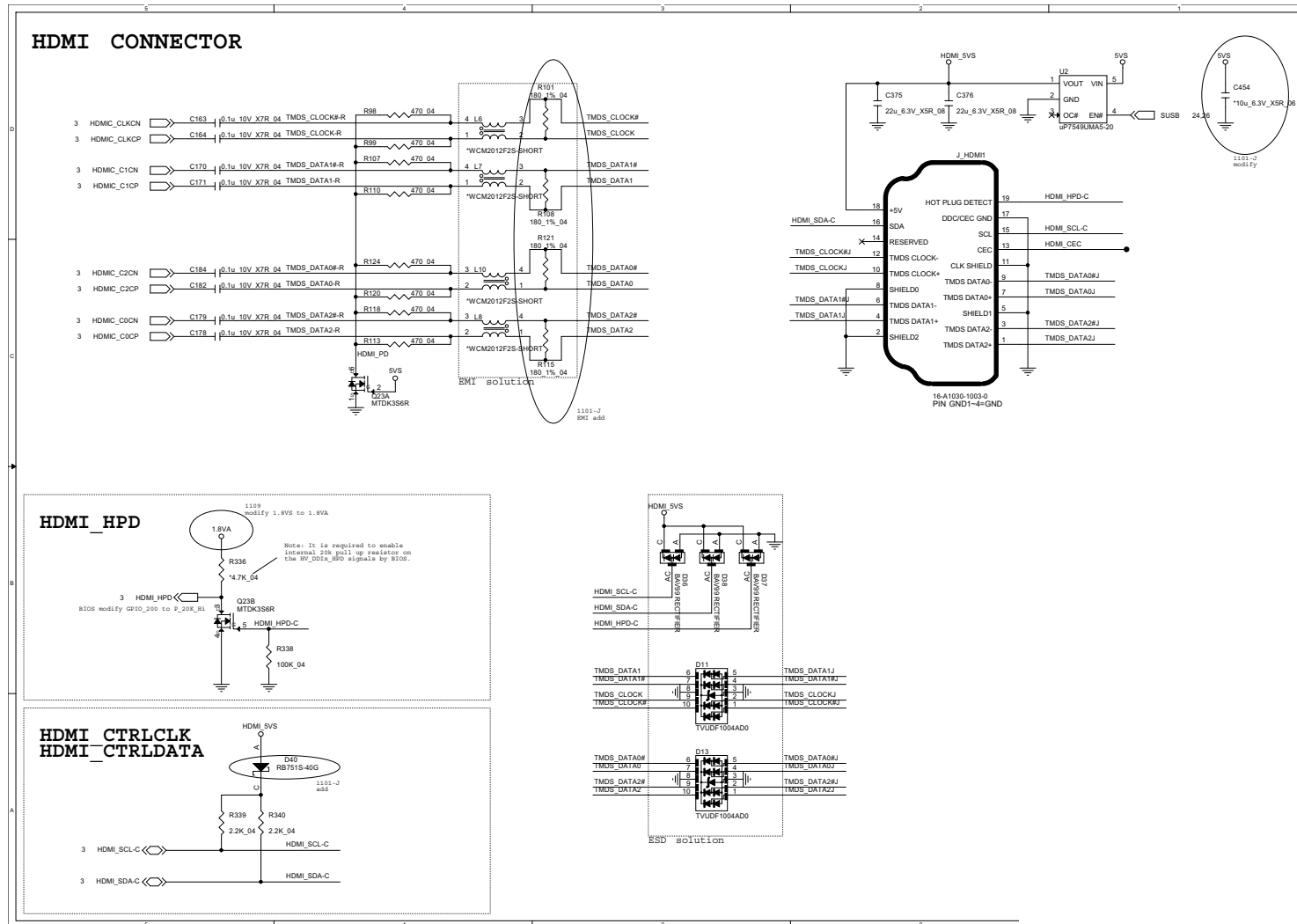
Sheet 15 of 33  
RTD2168, CRT

## RTD2168 (DP to VGA)



# HDMI

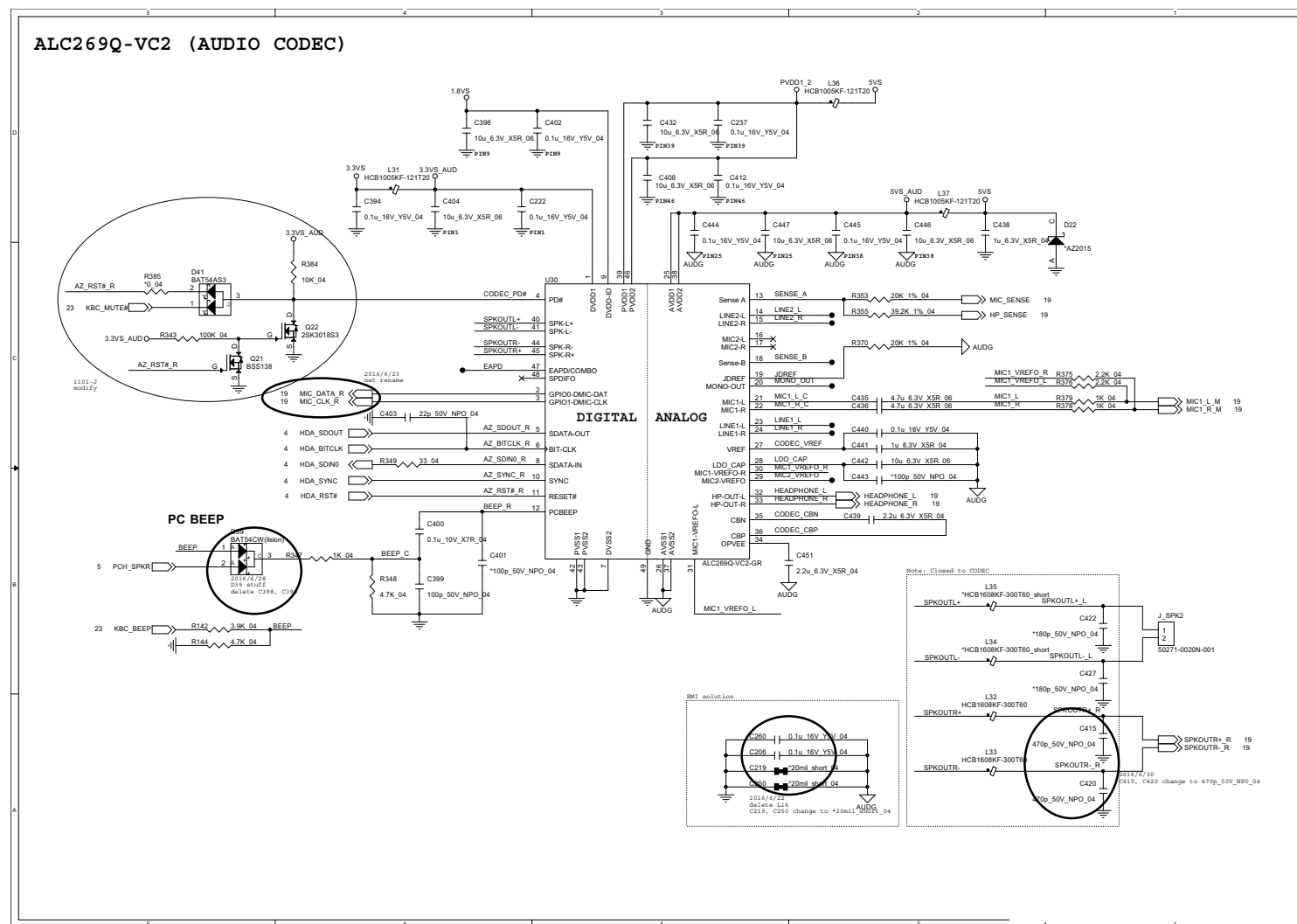
Sheet 16 of 33  
HDMI



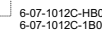
## Audio Codec

## B. Schematic Diagrams

Sheet 17 of 33  
Audio Codec

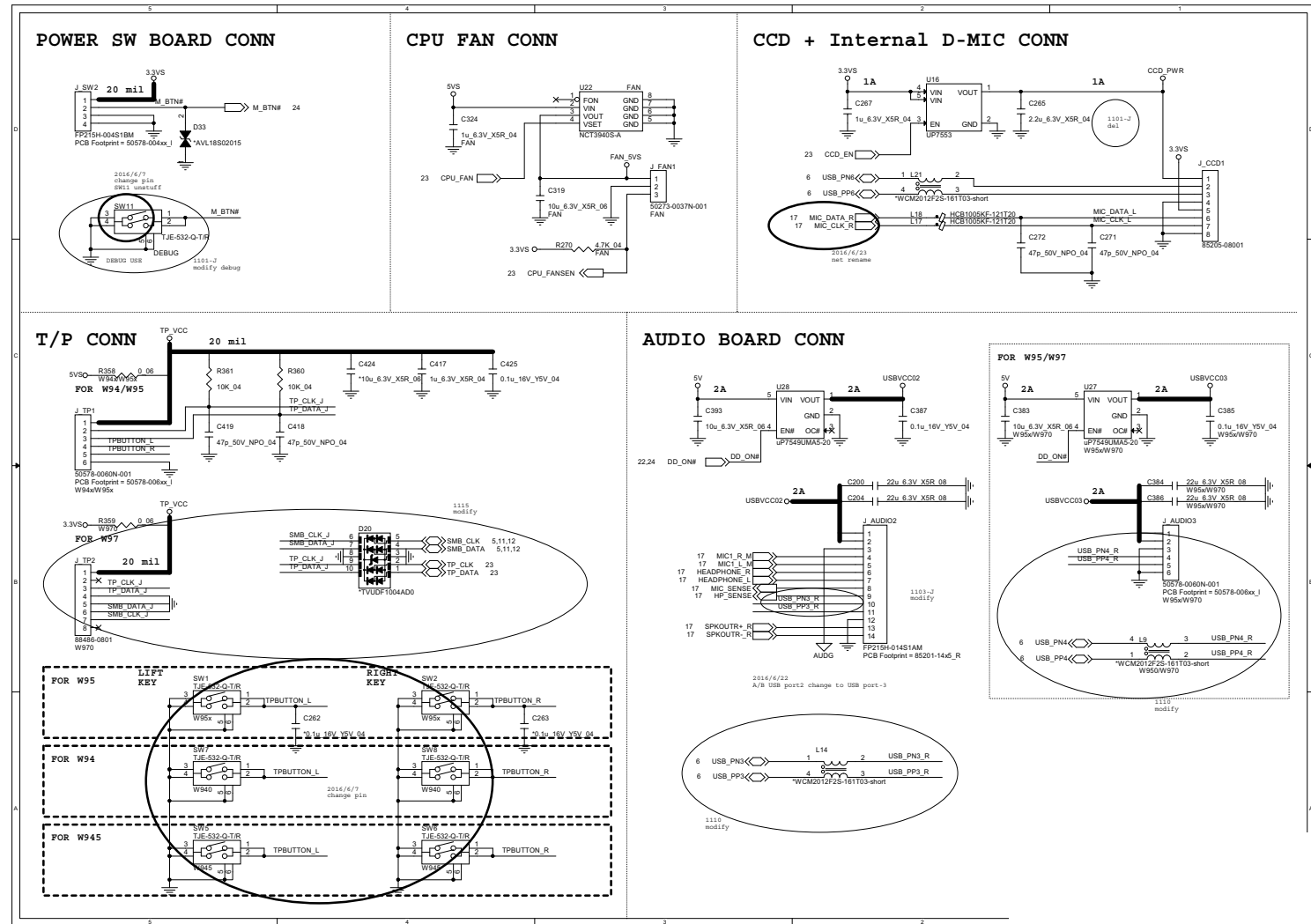


## RTL8411B B - 19



## Schematic Diagrams

# Fan, Click, CCD Conn

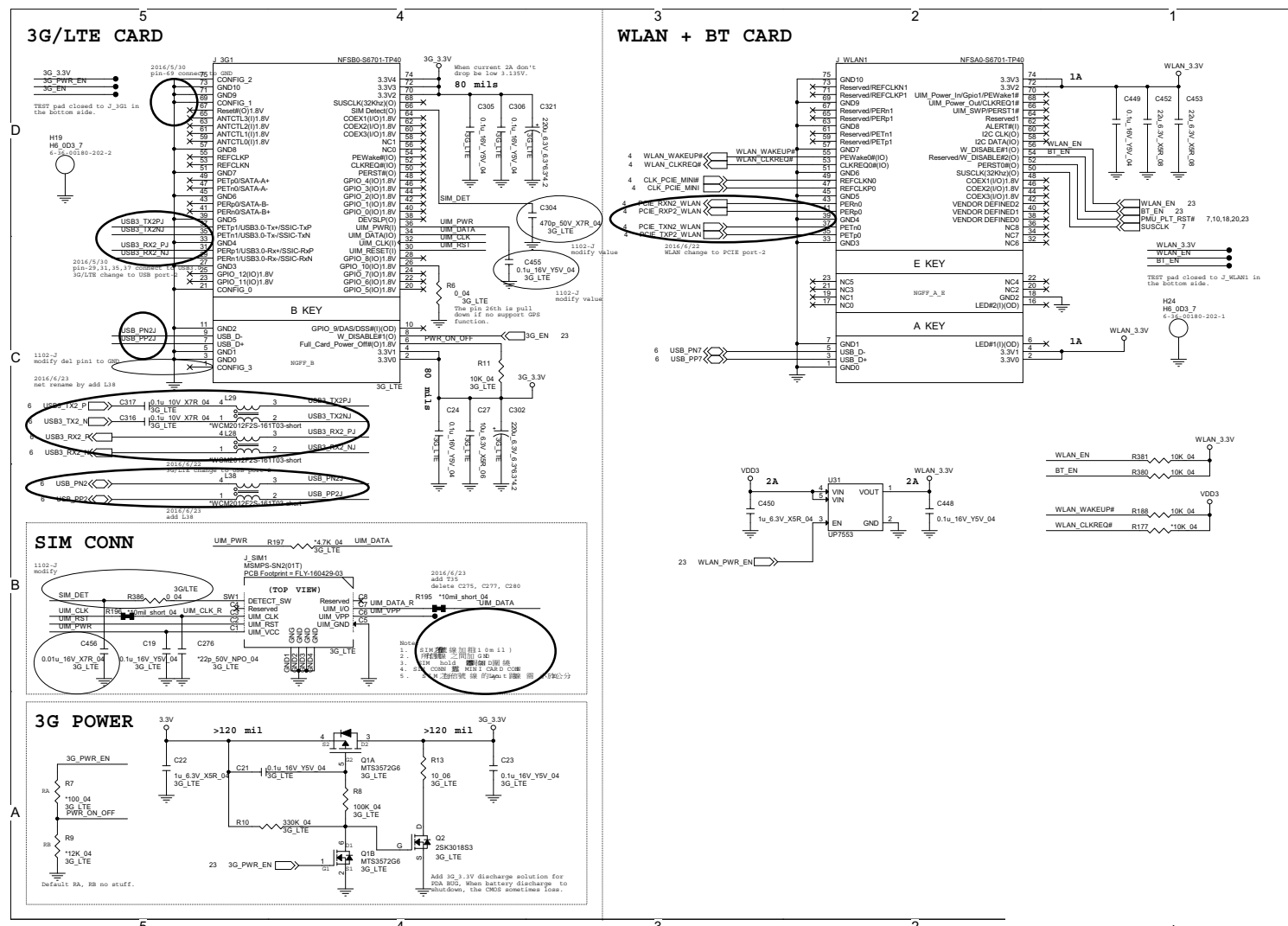


HDD, ODD, LED, LID, TPM B - 21

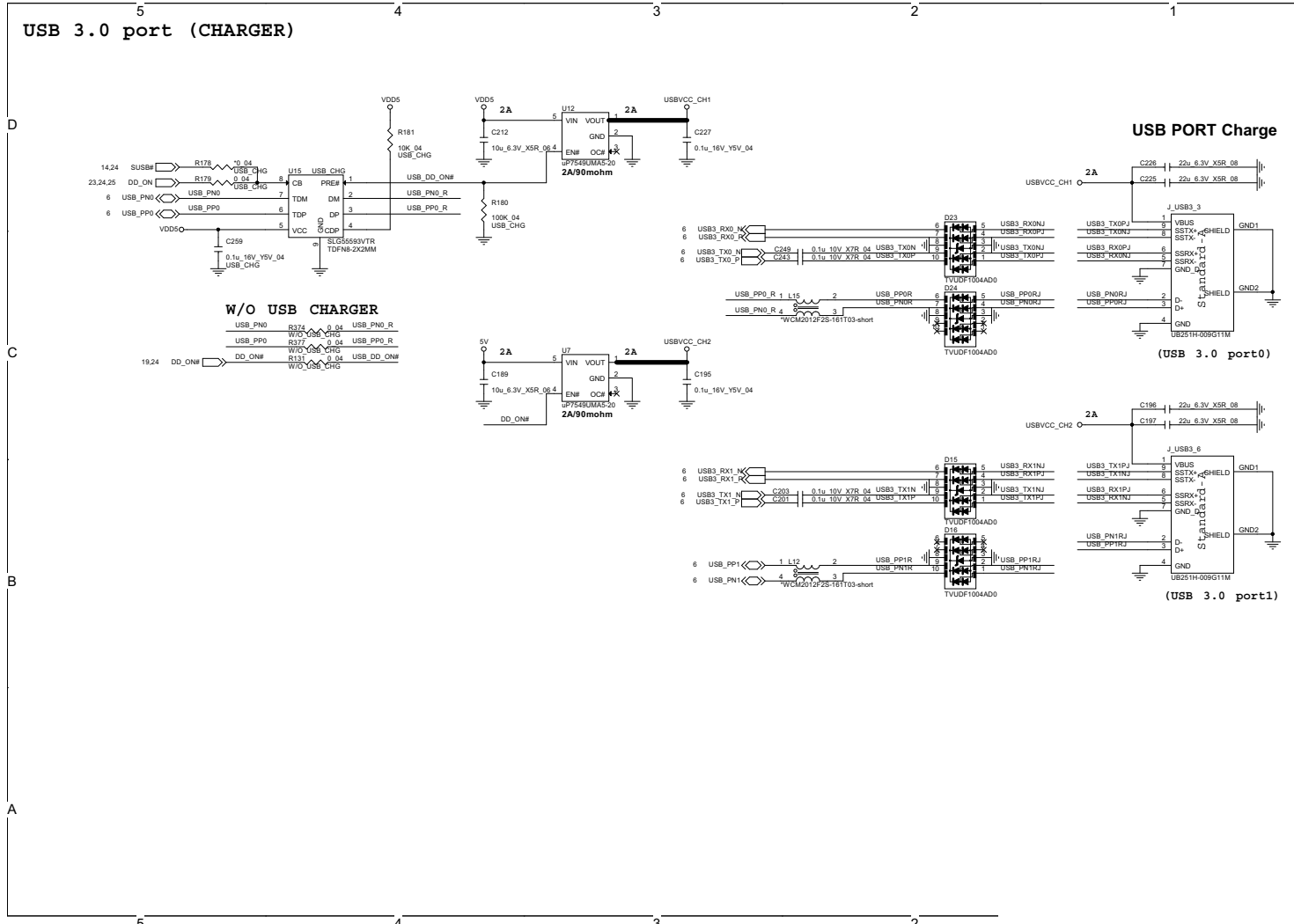


# NGFF

**Sheet 21 of 33**  
**NGFF**



# USB

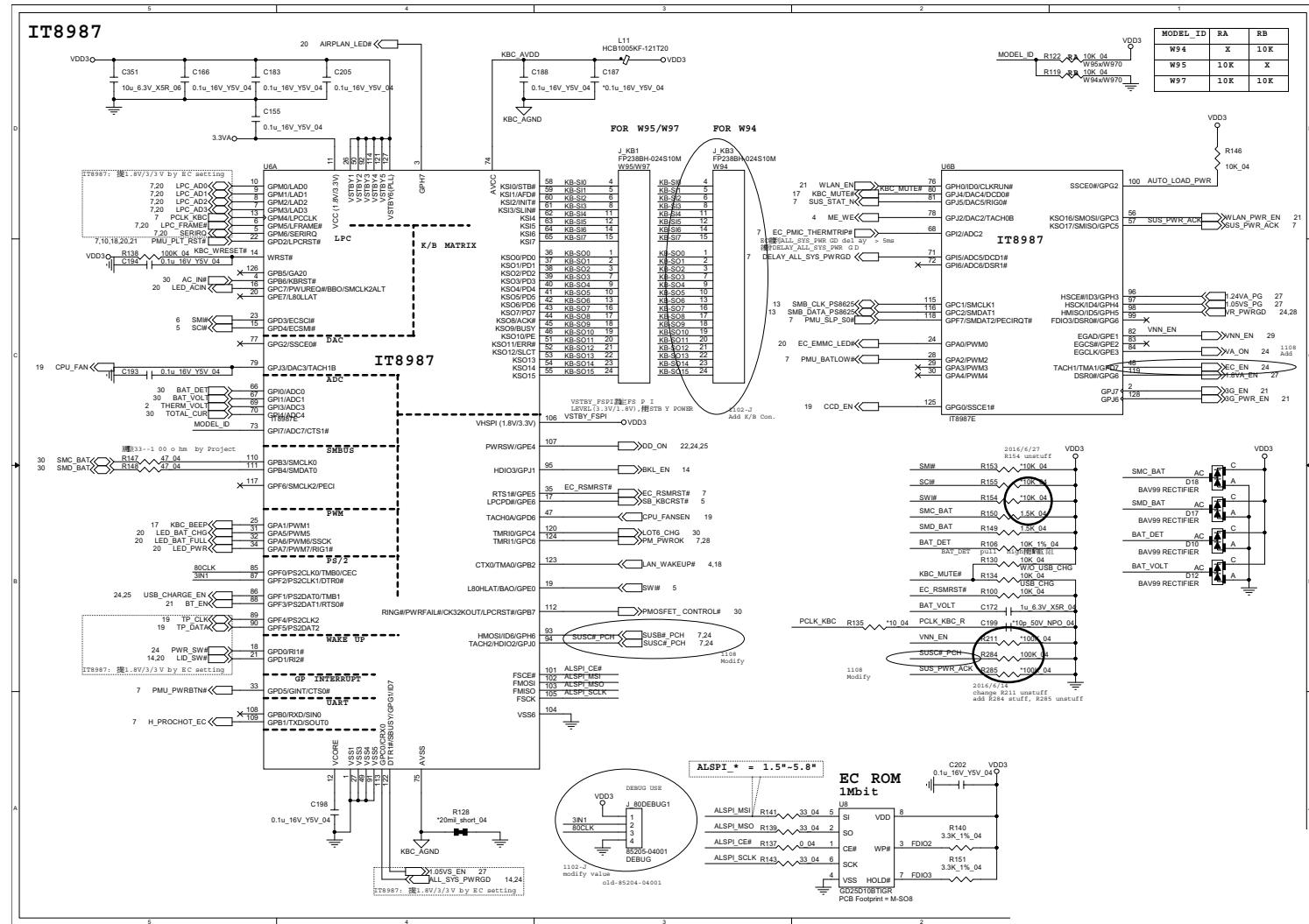


**Sheet 22 of 33**  
**USB**

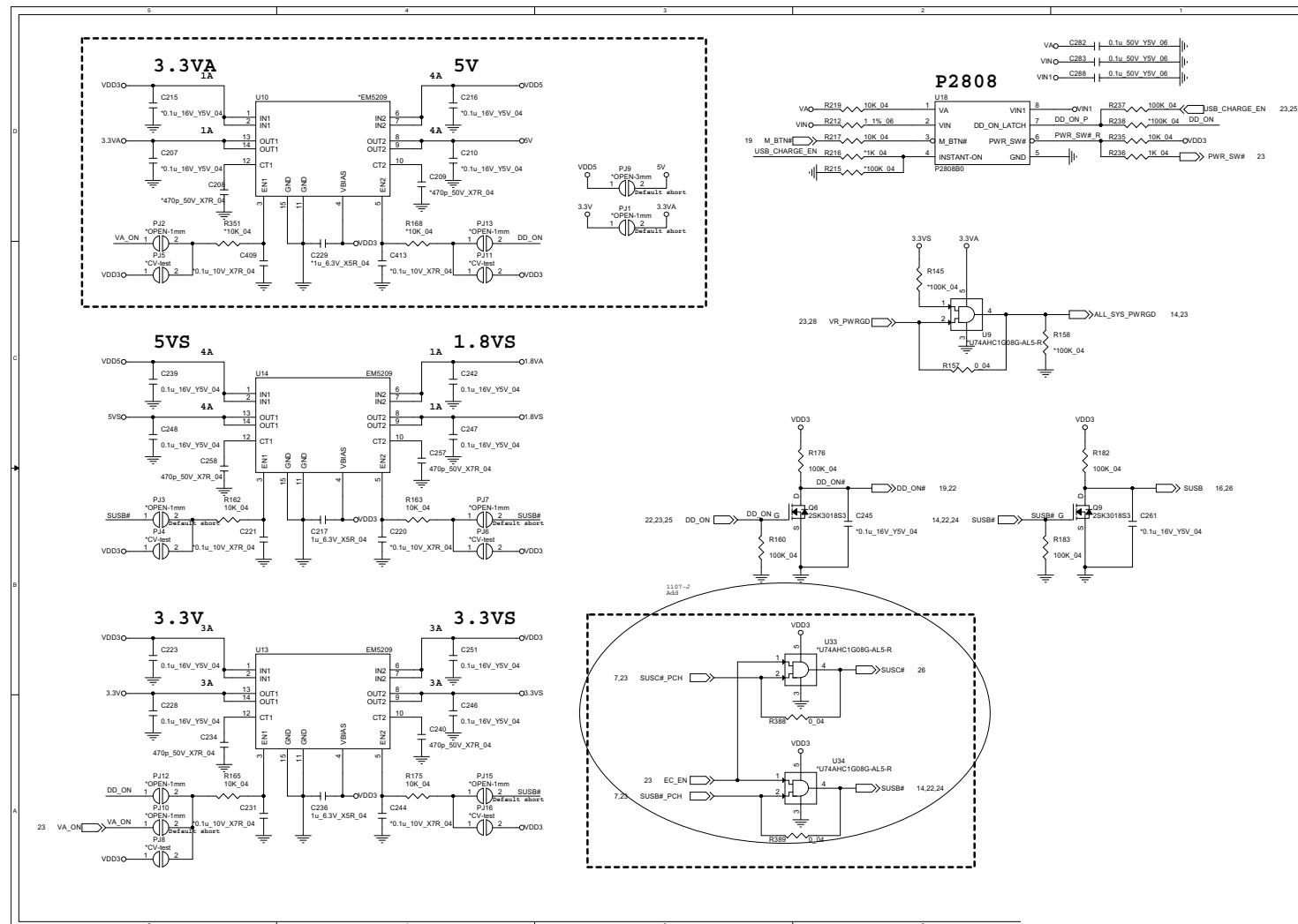
## B.Schematic Diagrams

# KBC IT8987E

Sheet 23 of 33  
KBC IT8987E



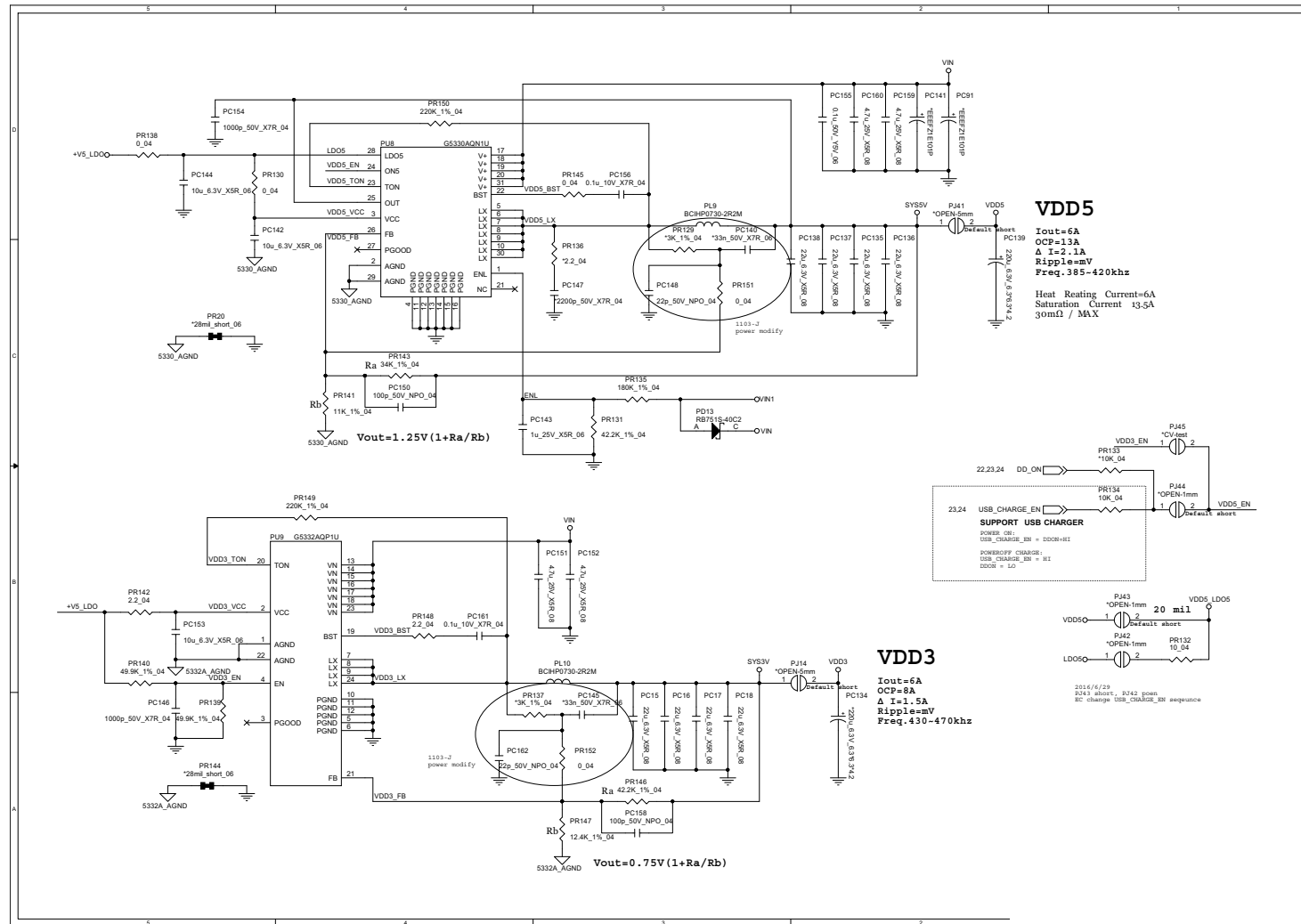
## System Power B - 25



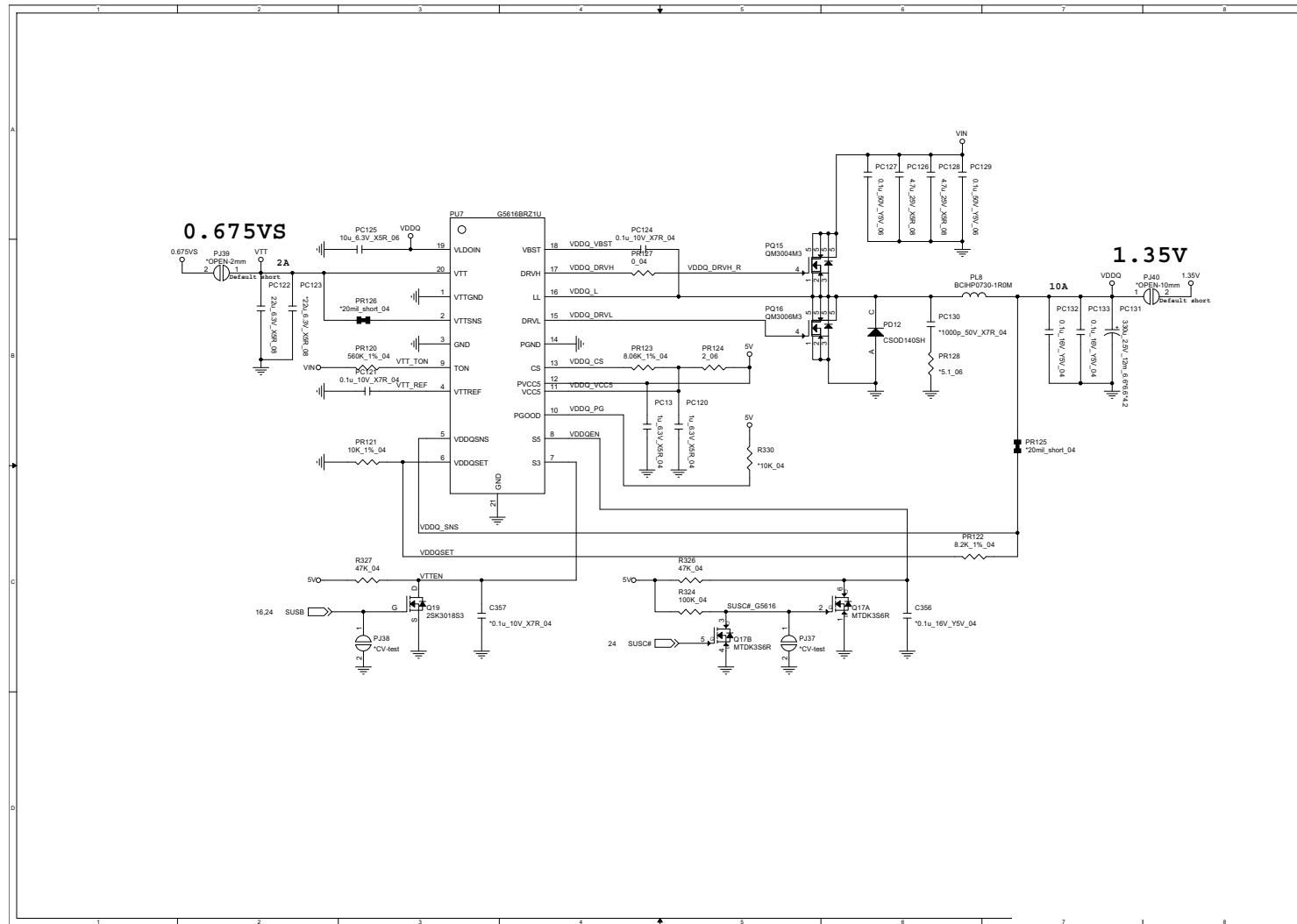
## Schematic Diagrams

## VDD3, VDD5

Sheet 25 of 33  
VDD3, VDD5



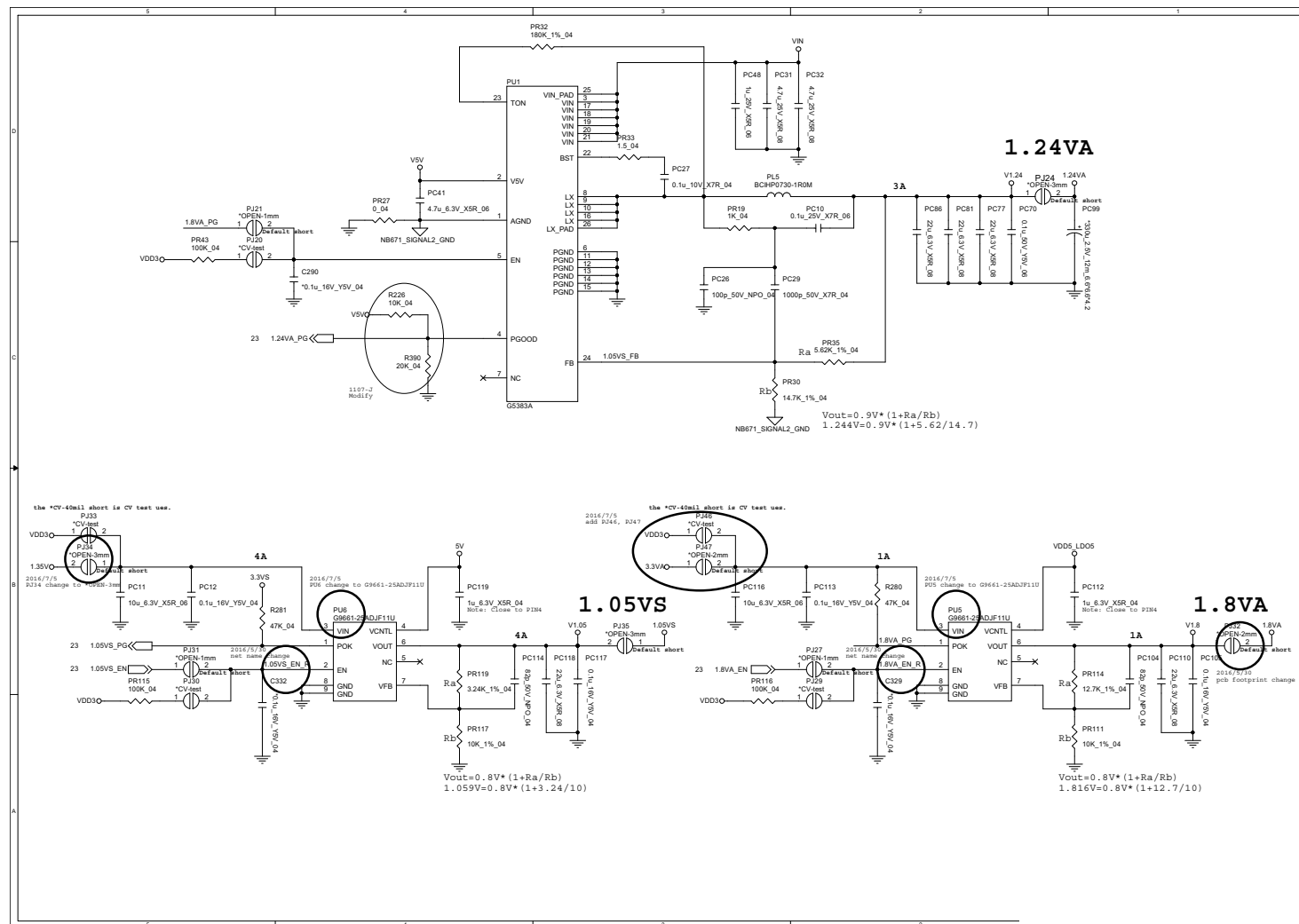
## PWR\_VDDQ, VTT B - 27



Sheet 26 of 33  
PWR\_VDDQ, VTT

## B. Schematic Diagrams

**Sheet 27 of 33**  
**1.05VA, 1.8VA,**  
**1.24VA**

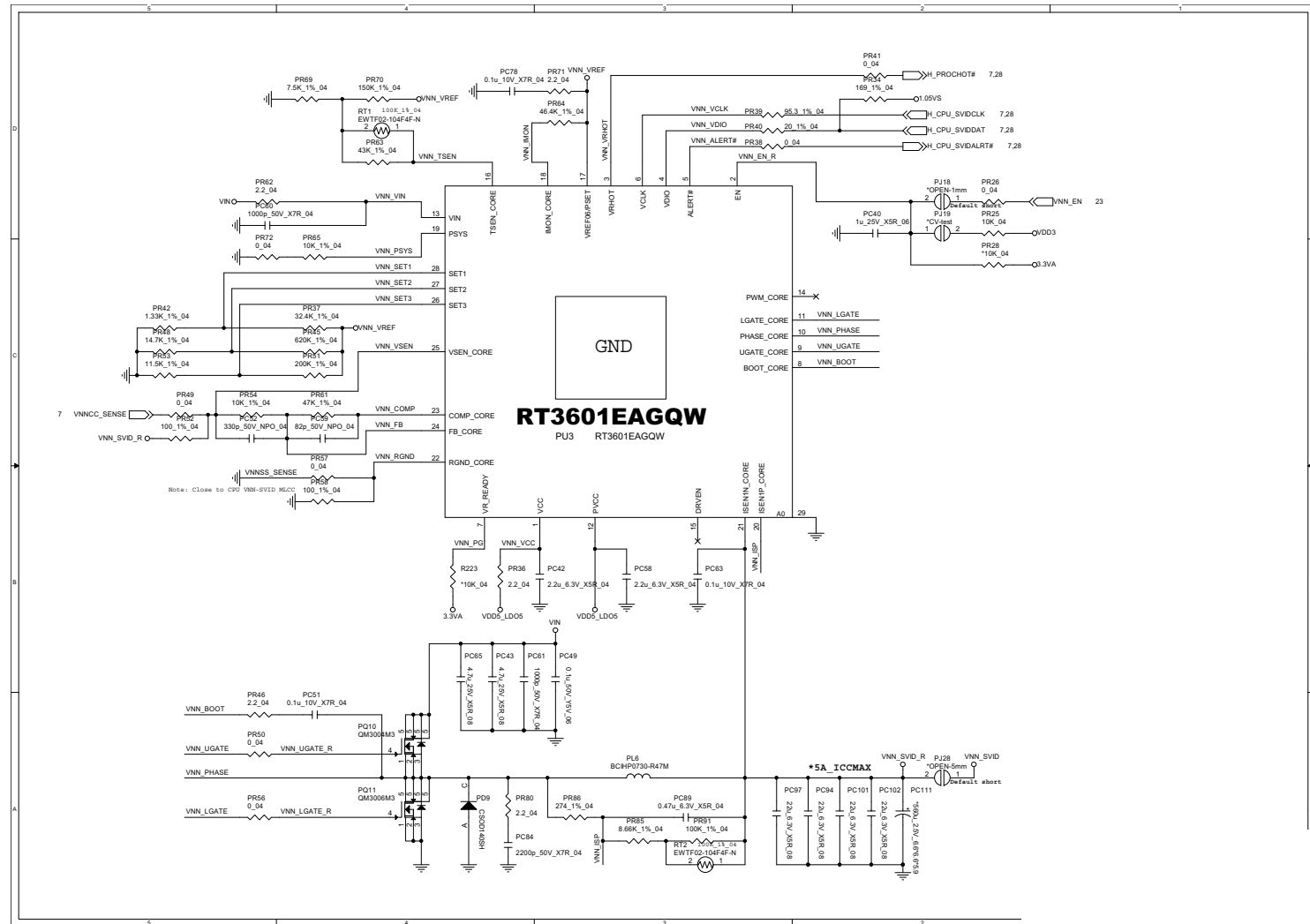




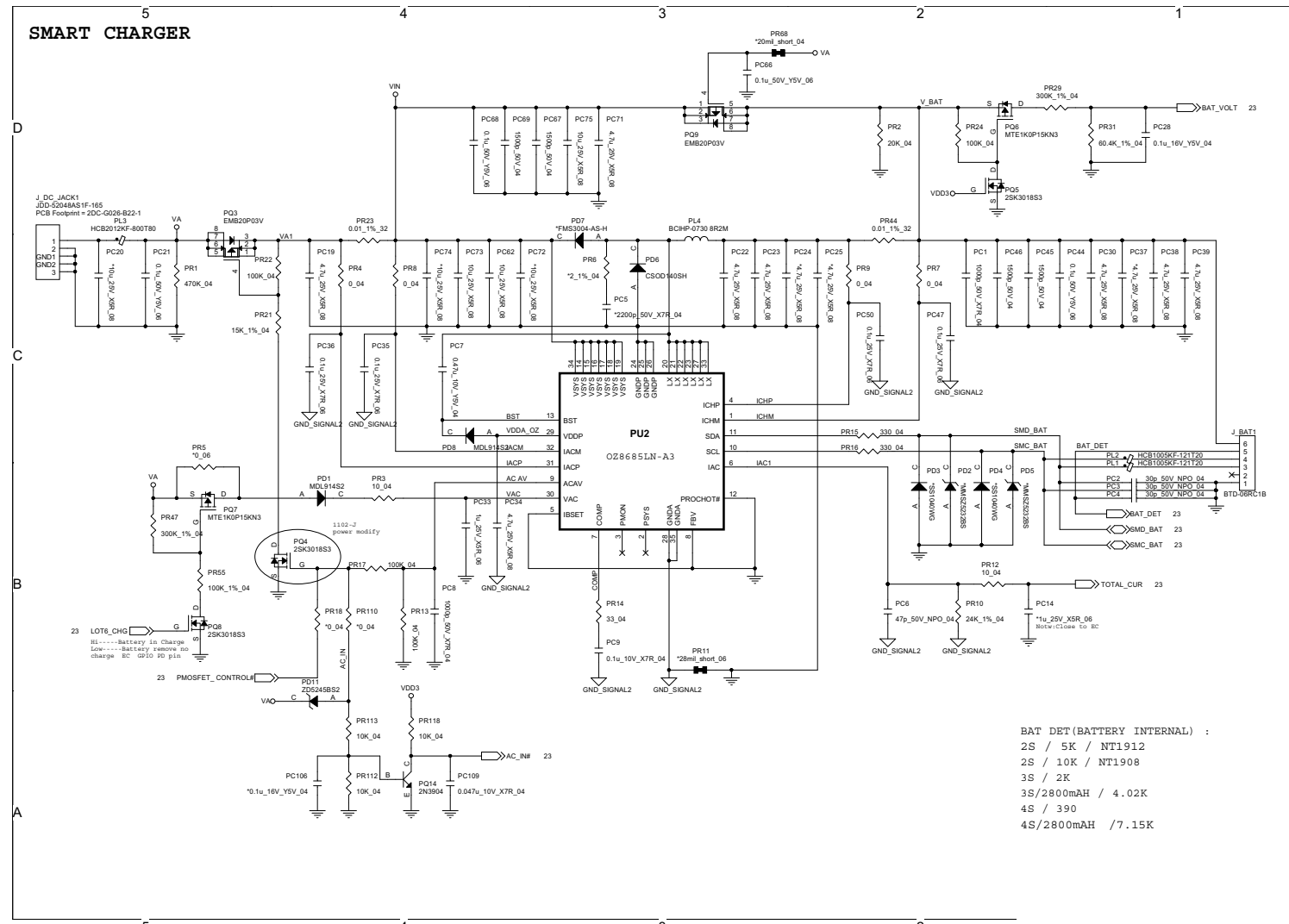
**PWR\_VCGI B - 29**

**PWR\_VNN**

Sheet 29 of 33  
PWR\_VNN



**AC\_IN, Charger B - 31**

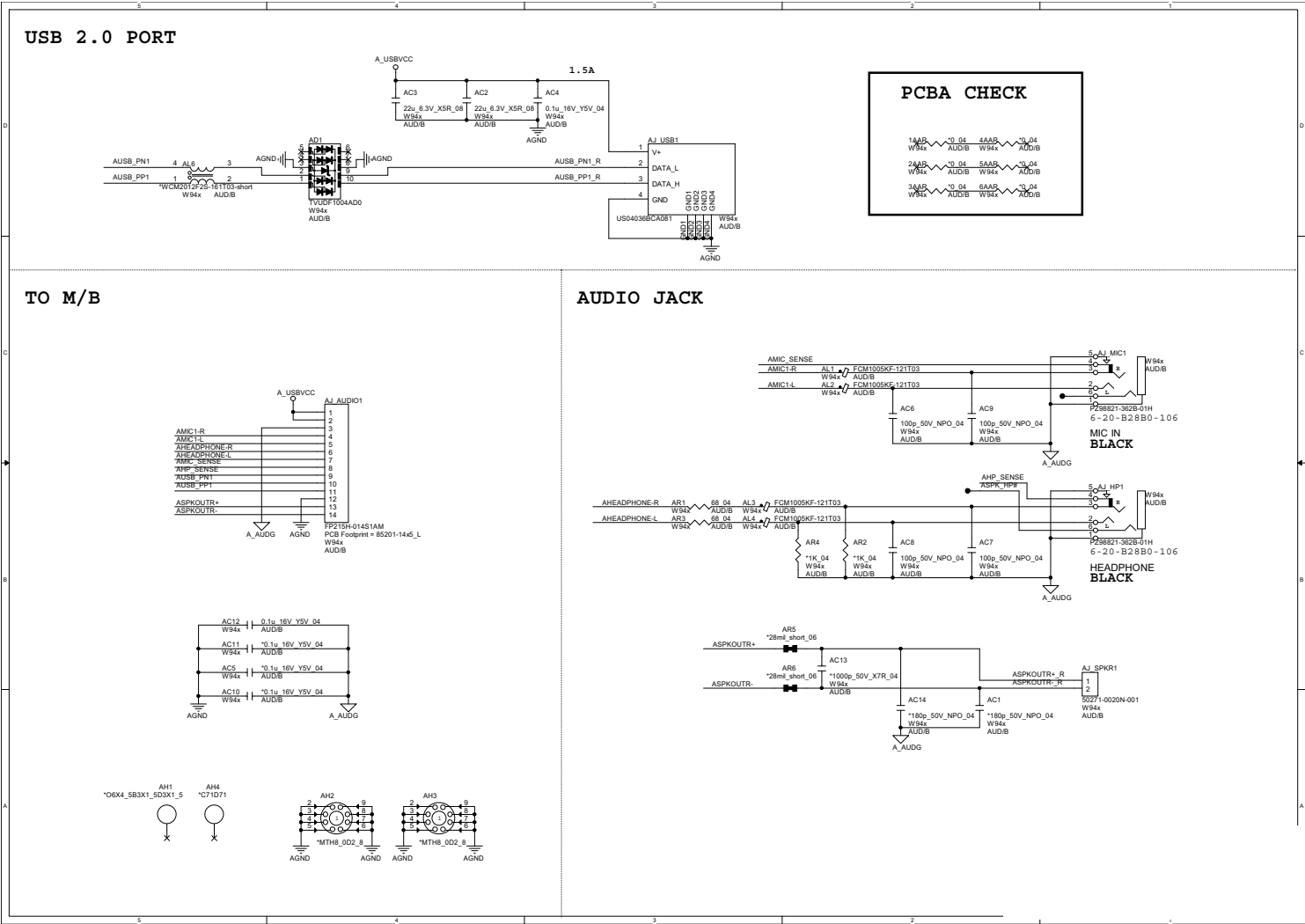


Sheet 30 of 33  
AC\_IN, Charger

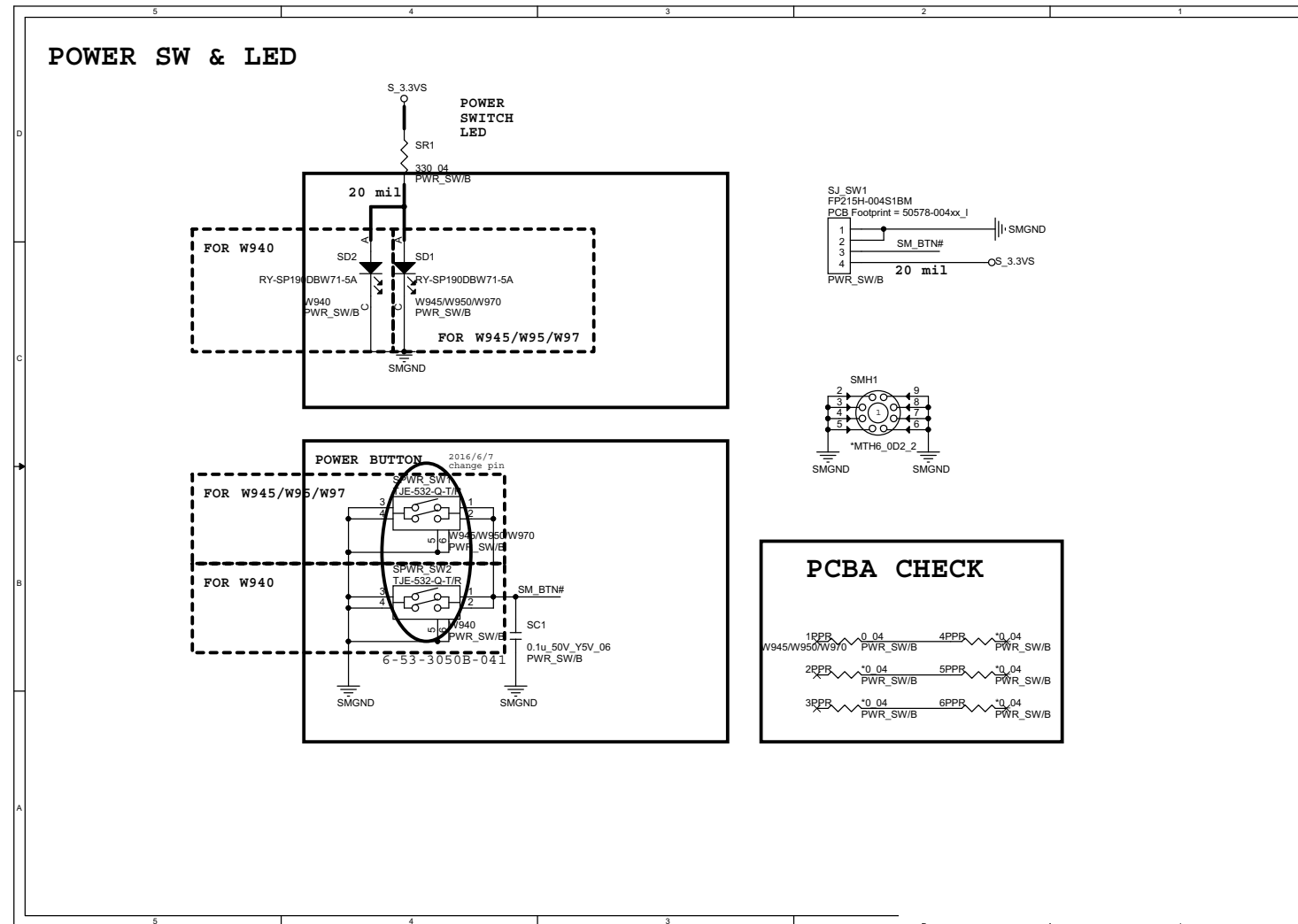
Schematic Diagrams

Audio Board

Sheet 31 of 33  
Audio Board

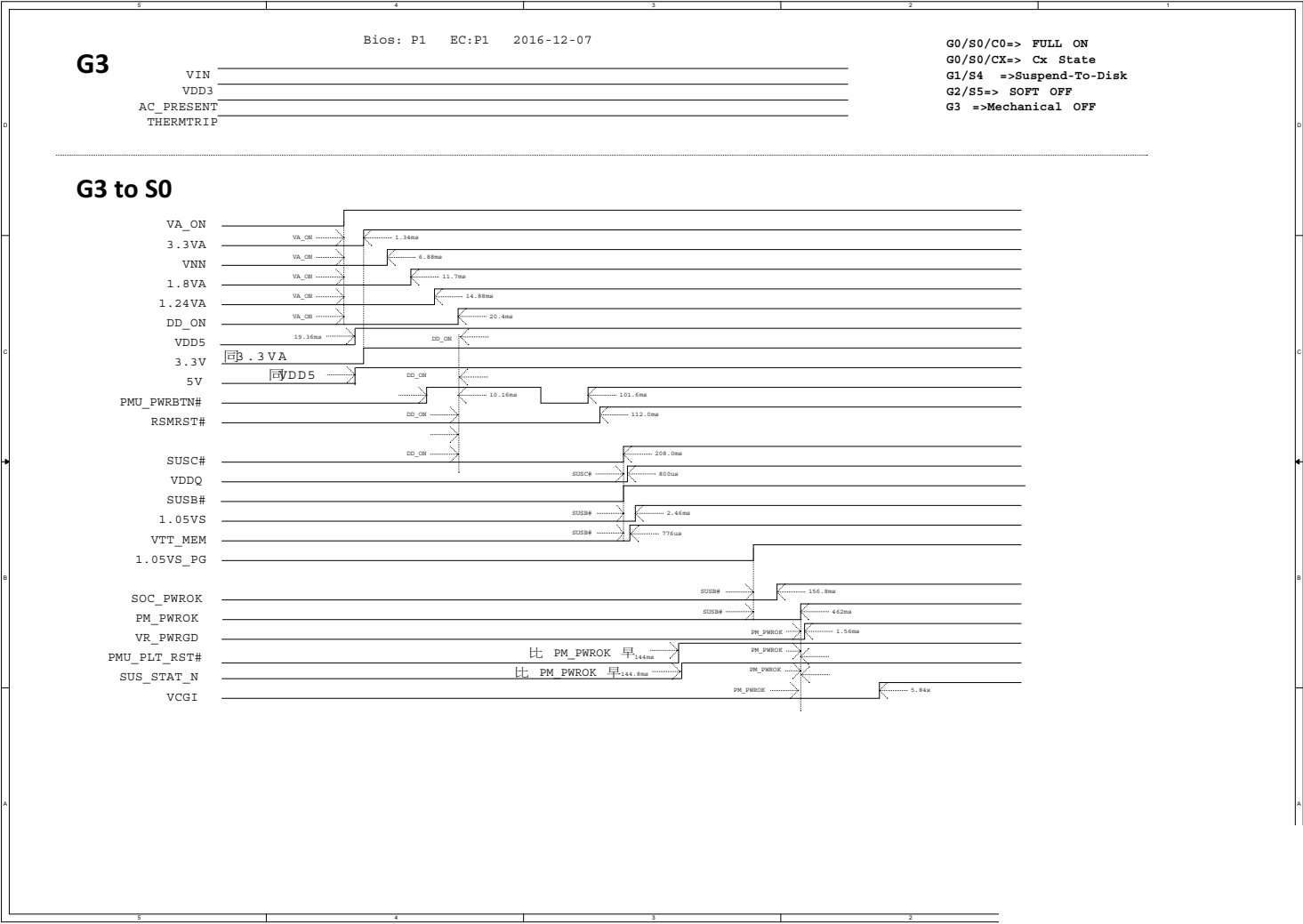


## Power SW Board

Sheet 32 of 33  
Power SW Board

Power Sequence

Sheet 33 of 33  
Power Sequence



# Appendix C: Updating the FLASH ROM BIOS

## To update the FLASH ROM BIOS, you must:

- Download the BIOS update from the web site.
- Unzip the files onto a bootable CD/DVD/USB Flash Drive.
- Reboot your computer from an external CD/DVD/USB Flash Drive.
- Use the flash tools to update the flash BIOS using the commands indicated below.
- Restart the computer booting from the HDD and press **F2** at startup enter the BIOS.
- Load setup defaults from the BIOS and save the default settings and exit the BIOS to restart the computer.
- After rebooting the computer you may restart the computer again and make any required changes to the default BIOS settings.

## Download the BIOS

1. Go to [www.clevo.com.tw](http://www.clevo.com.tw) and point to **E-Services** and click **E-Channel**.
2. Use your user ID and password to access the appropriate download area (BIOS), and download the latest BIOS files (the BIOS file will be contained in a batch file that may be run directly once unzipped) for your computer model (see sidebar for important information on BIOS versions).

## Unzip the downloaded files to a bootable CD/DVD/ or USB Flash drive

1. Insert a bootable CD/DVD/USB flash drive into the CD/DVD drive/USB port of the computer containing the downloaded files.
2. Use a tool such as Winzip or Winrar to unzip all the BIOS files and refresh tools to your bootable CD/DVD/USB flash drive (you may need to create a bootable CD/DVD with the files using a 3rd party software).

## Set the computer to boot from the external drive

1. With the bootable CD/DVD/USB flash drive containing the BIOS files in your CD/DVD drive/USB port, restart the computer and press **F2** (in most cases) to enter the BIOS.
2. Use the arrow keys to highlight the **Boot** menu.
3. Use the “+” and “-” keys to move boot devices up and down the priority order.
4. Make sure that the CD/DVD drive/USB flash drive is set first in the boot priority of the BIOS.
5. Press **F4** to save any changes you have made and exit the BIOS to restart the computer.



### BIOS Version

Make sure you download the latest correct version of the BIOS appropriate for the computer model you are working on.

**You should only download BIOS versions that are V1.0X.XX or higher as appropriate for your computer model.**

Note that BIOS versions are not backward compatible and therefore **you may not downgrade your BIOS to an older version** after upgrading to a later version (e.g if you upgrade a BIOS to ver 1.0X.05, you **MAY NOT** then go back and flash the BIOS to ver 1.0X.04).



## BIOS Update

---

### Use the flash tools to update the BIOS

1. Make sure you are not loading any memory management programs such as HIMEM by holding the **F8** key as you see the message “**EFI Shell**”. You will then be prompted to give “**Y**” or “**N**” responses to the programs being loaded by EFI Shell. Choose “**N**” for any memory management programs.
2. You should now see **DISK fsX:\>** (X is the designated drive number for the CD/DVD drive/USB flash drive).
3. **Type the following command:**

**fsX:\> Flash.nsh**

4. The utility will then proceed to flash the BIOS.
5. You should then be prompted to press any key to restart the system or turn the power off, and then on again but make sure you remove the CD/DVD/USB flash drive from the CD/DVD drive/USB port before the computer restarts.

### Restart the computer (booting from the HDD)

1. With the CD/DVD/USB flash drive removed from the CD/DVD drive/USB port the computer should restart from the HDD.
2. Press **F2** as the computer restarts to enter the BIOS.
3. Use the arrow keys to highlight the **Exit** menu.
4. Select **Load Setup Defaults** (or press **F3**) and select “**Yes**” to confirm the selection.
5. Press **F4** to save any changes you have made and exit the BIOS to restart the computer.

### Your computer is now running normally with the updated BIOS

You may now enter the BIOS and make any changes you require to the default settings.